

EAGLE FAMILY ACCESSORIES



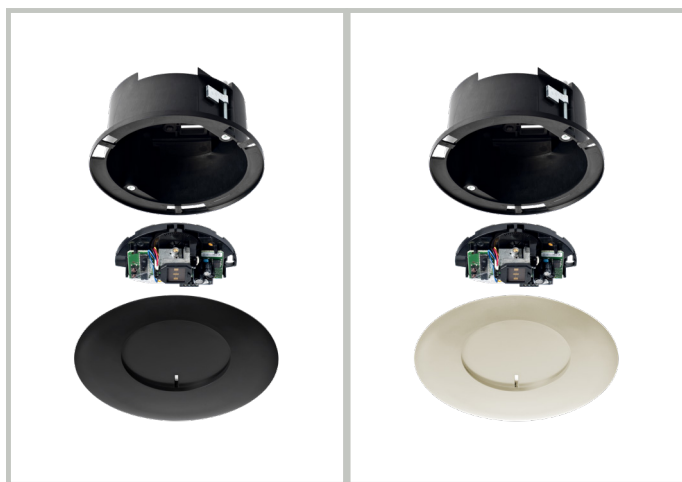
RAIN COVER
10ERC



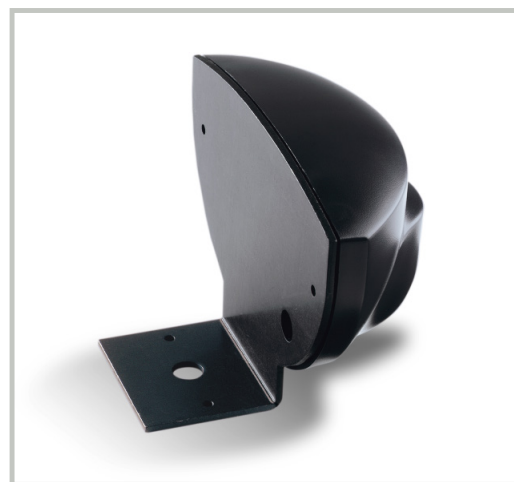
SPACER
10EAGLESPACER



RAIN ACCESSORY
10ERA



CEILING ACCESSORY
10ECA



MOUNTING BRACKET
10EMB

PRECAUTIONS

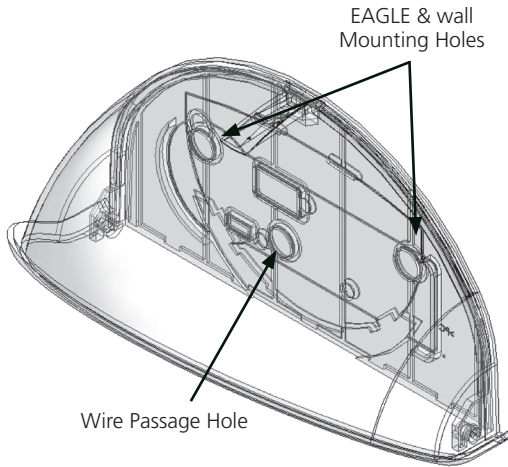


- ❑ Maintain a clean and safe environment when working in public areas.
- ❑ Constantly be aware of pedestrian traffic around the door area.
- ❑ Always stop pedestrian traffic through the doorway when performing tests that may result in unexpected reactions by the door.
- ❑ Ensure compliance with all applicable safety standards (i.e. ANSI A156.10) upon completion of installation.

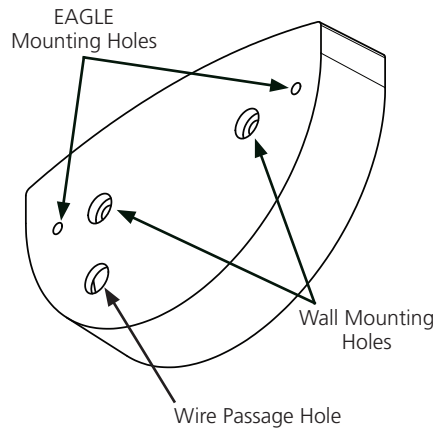
Reference *EAGLE FAMILY User's Guide (75.5957)* for full EAGLE installation and setup.

INSTALLATION

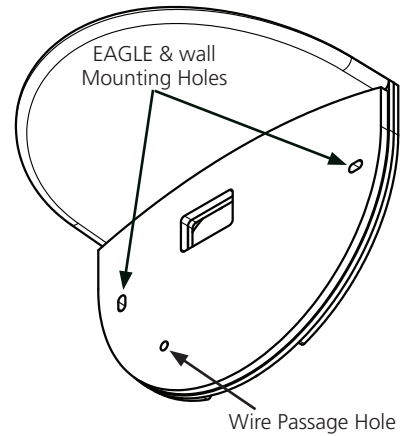
RAIN COVER 10ERC



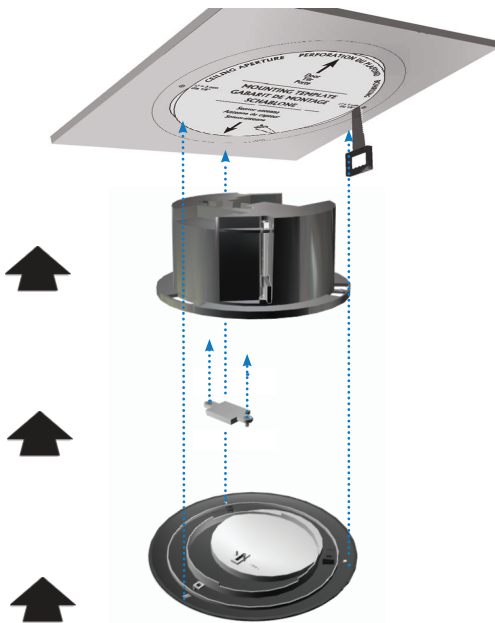
SPACER 10EAGLESPACER



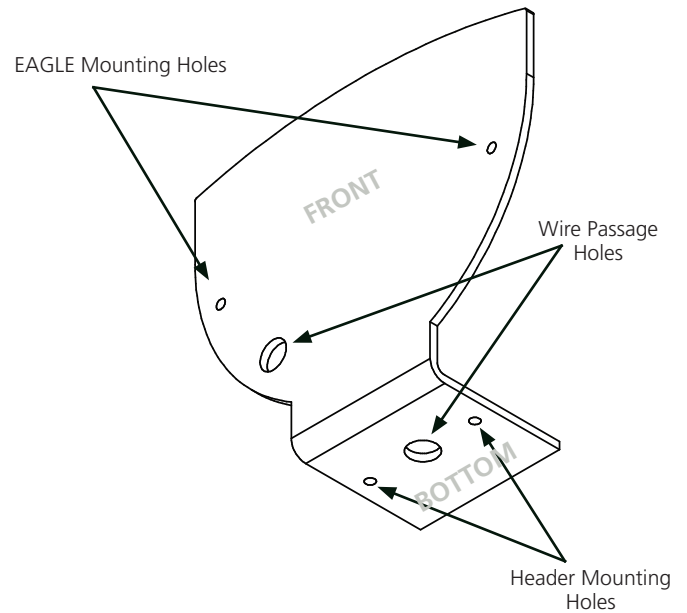
RAIN ACCESSORY 10ERA



CEILING ACCESSORY 10ECA



MOUNTING BRACKET 10EMB



BEA INSTALLATION/SERVICE COMPLIANCE EXPECTATIONS

BEA, the sensor manufacturer, cannot be held responsible for incorrect installations or inappropriate adjustments of the sensor/device; therefore, BEA does not guarantee any use of the sensor outside of its intended purpose.

BEA strongly recommends that installation and service technicians be AAADM-certified for pedestrian doors, IDA-certified for doors/gates, and factory-trained for the type of door/gate system.

Installers and service personnel are responsible for executing a risk assessment following each installation/service performed, ensuring that the sensor system installation is compliant with local, national, and international regulations, codes, and standards.

Once installation or service work is complete, a safety inspection of the door/gate shall be performed per the door/gate manufacturer recommendations and/or per AAADM/ANSI/DASMA guidelines (where applicable) for best industry practices. Safety inspections must be performed during each service call – examples of these safety inspections can be found on an AAADM safety information label (e.g. ANSI/DASMA 102, ANSI/DASMA 107).

Verify that all appropriate industry signage and warning labels are in place.



A HALMA COMPANY

Tech Support: 1-800-407-4545 | Customer Service: 1-800-523-2462 | General Tech Questions: Tech_Services@beainc.com | Tech Docs: www.BEAinc.com

©BEA | Original Instructions

75.5981.01 EAGLE FAMILY ACCESSORIES 20180913