



# ELECTRIC STRIKES

RIM EXIT & UNIVERSAL CYLINDRICAL STRIKES  
FOR ACCESS CONTROL

## PRODUCT



[Go to the product page](#)

## CERTIFICATIONS

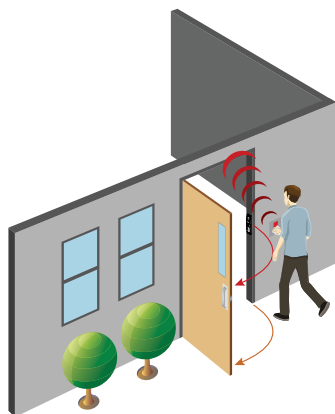
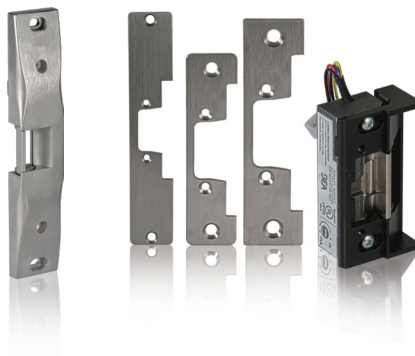


## DESCRIPTION

BEA's **ELECTRIC STRIKE** portfolio includes **RIM EXIT** and **UNIVERSAL CYLINDRICAL STRIKES** for access control applications.

The **RIM EXIT STRIKE** is designed specifically for rim exit devices. This strike is completely surface mounted, which eliminates the need to cut into the door frame.

The **UNIVERSAL CYLINDRICAL STRIKE** provides controlled access and security for egress and ingress applications where code compliance and safety are paramount. This strike is UL 294 listed.



## Modular Faceplate Options

Three modular faceplates for the most common door types: hollow metal, aluminum and wood

## Standard Compliant

UL 294 listed Universal Cylindrical strike

## Sturdy Design

Conventional keeper design promotes even-load distribution in the event of a forced entry

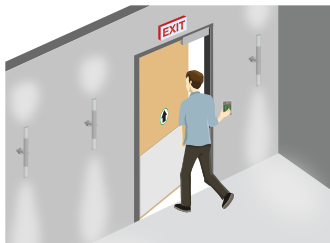
## Robust Housing

Reinforced housing reduces twisting on imperfect frames

## UL Listed

UL / ULC listed for up to 1,500 lbs of static strength

## APPLICATIONS



Request-To-Exit

## TECHNICAL SPECIFICATIONS

### 10STRIKERE

Mode	Fail Safe		
Voltage	12 VAC / VDC	24 VAC / VDC	11 – 16 VAC
Duty	Intermittent, Continuous	Intermittent, Continuous	Intermittent, Intermittent
Sound	Buzz, Silent	Buzz, Silent	Buzz, Buzz
Amps †	0.30, 0.50	0.64, 0.24	0.32 – 0.50
Ohms ‡	22, 22	22, 89	22

### 10STRIKECU

Mode	Fail Safe, Fail Secure		
Voltage	12 VDC	24 VDC	12 – 24 VAC
Duty	Continuous	Continuous	Intermittent
Sound	Silent	Silent	Buzz
Amps †	0.375	0.190	0.280 – 0.565
Ohms ‡	35	148	37

Fail Safe – Lock or locking device that remains unlocked on loss of power

Fail Secure – Lock or locking device that remains locked on loss of power.

Also known as Non-Fail Safe (NFS)

Intermittent Duty – Energized less than 1 minute with duty ratio 1:5

Continuous Duty – Energized 1 minute or more

† Amp ratings are based on maximum current draw at 50 °F and include initial power-up current

‡ Nominal resistance at 77 °F ±7% tolerance

## PRODUCT SERIES



**10STRIKERE**  
Rim exit electric strike



**10STRIKECU**  
Universal cylindrical electric strike

**DISCLAIMER** Information is supplied upon the condition that the persons receiving it will make their own determination as to its suitability for their purposes prior to use. In no event will BEA be responsible for damages of any nature whatsoever resulting from the use of or reliance upon information from this document or the products to which the information refers. BEA has the right without liability to change descriptions and specifications at any time.

[WWW.BEASENSORS.COM](http://WWW.BEASENSORS.COM)



BEA AMERICAS / RIDC Park West / 100 Enterprise Drive / Pittsburgh, PA  
T 1-800-523-2462 / F 1-888-523-2462 / E info-us@BEAsensors.com

A **Halma** company