



SECURITY & ACCESS SOLUTIONS



▶ TECHNOLOGIES



LASER technology works according to the principle of Time-of-Flight (ToF). The sensor sends an intense light impulse in a defined direction and measures the time until the signal returns. As the speed of light is a constant value (approximately 300,000 km/s), this time is directly proportional to the distance between the sensor and the first object encountered by the light impulse.

As a result, and by sending multiple beams in multiple directions (2D or 3D), the sensor is capable of knowing the exact position of any object in its detection area at any given time.



ACTIVE INFRARED with background analysis technology works with a background (e.g. a sensor shines infrared light on the floor). In this case, the sensor lights up one or more areas and analyzes the energy that returns. Detection is triggered if there is any significant difference when compared to the original picture.



ACTIVE INFRARED with background suppression technology works on the principle of “triangulation” in which the sensor calculates the distance between the emitter and receiver. The emission angle is already known and the reflection angle becomes the key element as the distance to the object can be calculated according to the position of the reflected spot on the receiver side (a triangle can be drawn when you know one distance and two angles)



PASSIVE INFRARED technology measures the infrared light radiating from objects in its field of view. Motion or presence is detected when an infrared source with one temperature, such as a human being, passes in front of an infrared source with another temperature, such as the normal environment.



RADAR technology, also known as microwave technology, is based on the Doppler Effect: the radar sensor continuously emits microwaves with a certain frequency in a defined area. These microwaves are reflected back to the sensor by all of the objects present in its environment.



PIEZO technology, also known as piezoelectric, is the process of converting mechanical pressure (pushing a button) into electrical energy. A piezo switch is paired with a field effect transistor (FET) that, when pushed, allows current to flow through the FET.



CAPACITIVE technology detects close-range electrically charged objects. A small voltage is applied to a conductive surface, resulting in a uniform electrostatic detection field. When a conductor, such as the human hand, enters this field, detection occurs.



RADIO CONTROL FREQUENCY wireless technology uses transmitters and receivers operating on specific radio frequencies. The transmitter applies a radio frequency alternating current to an antenna, which then radiates radio waves. The receiver receives the transmitted frequency and converts the information into a usable form.



VIDEO technology uses optics and light to create pictures and videos. Enhanced definition cameras capture door environment and traffic usage in full color and high quality. Cameras are used within sensors to increase security and decrease liability.





- 1 MAGIC SWITCH**
TOUCHLESS ACTUATORS
- 2 LPR36**
36" FULL LENGTH ACTUATOR
- 3 PUSH PLATES**
STAINLESS STEEL PUSH PLATES
- 4 900 MHZ SERIES**
LONG RANGE WIRELESS
TRANSMITTERS & RECEIVER
- 5 PNEUMATIC BUTTONS**
RUGGEDIZED BUTTON
WITH ADJUSTABLE HOLD TIME
- 6 UNIVERSAL KEYPAD**
IP66 RATED
ACCESS CONTROL DEVICE
- 7 UL LISTED MAGLOCKS**
ELECTROMAGNETIC LOCK
- 8 ELECTRIC STRIKES**
LOCKING DEVICES
- 9 DE MAGLOCK KIT**
ELECTROMAGNETIC LOCK FOR
EXIT DOOR APPLICATIONS
- 10 LOGIC MODULES**
PROGRAMMABLE 2- & 3-RELAY
LOGIC MODULES
- 11 R2E-100**
FOCUSED ACTIVE INFRARED
REQUEST-TO-EXIT SENSOR
- 12 FLY KIT**
PASSIVE INFRARED SENSOR FOR
REQUEST-TO-EXIT APPLICATIONS
- 13 SUPERSCAN-T**
REACTIVATION SENSOR FOR
LOW ENERGY DOORS
- 14 SPARROW**
MICROWAVE MOTION SENSOR
- 15 LZR®-FLATSCAN SW**
STANDALONE DOOR-MOUNTED,
SWING DOOR SAFETY SENSOR
- 16 BEAMBOX**
PRESENCE SENSOR FOR
OFF-DOOR AUTOMATION
- 17 LZR®-S600**
LASER-BASED, PRESENCE SENSOR

KNOWING ACT DEVICES



MAGIC SWITCH

TOUCHLESS ACTUATORS



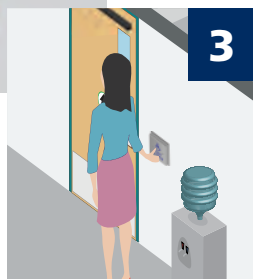
- Touchless design reduces spread of germs and bacteria
- Stainless steel models available
- Water-resistant (NEMA 4) variants available
- A variety of adjustable detection ranges are available:
 - MS08 / MS09 offers detection from 4 to 24 inches
 - MS11 offers detection from 2 to 24 inches
 - MS21 offers short-range, touchless activation



LPR36

36 INCH FULL LENGTH ACTUATOR

- Hardwired and wireless versions available
- An economical actuator for ADA building codes requiring two push plates



PUSH PLATES

STAINLESS STEEL PUSH PLATES

- **Convenient Push Plate Packages Available!**
- Available in various sizes and styles to fit almost any application, hardwired and wireless
- Water-resistant, NEMA 4 rated versions available



RESTROOM KIT

FOR SINGLE OCCUPANCY NORMALLY LOCKED / UNLOCKED RESTROOMS

- Kit includes BR3-X logic module, Occupied Indicator, "PUSH TO LOCK" Button and Door Position Switch

EMERGENCY ADD-ON KIT

FOR SINGLE OCCUPANCY RESTROOMS

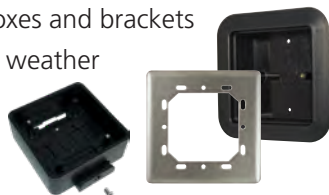
- Kit includes "ASSISTANCE REQUIRED" Signal, "PUSH FOR EMERGENCY ASSISTANCE" Button + Indicator and Emergency Signage

ACCESSORIES

MOUNTING BOXES

FLUSH & SURFACE MOUNT BOXES

- Easy battery access
- surface mount box available
- Mounting boxes and brackets
- Adapter and weather rings



BOLLARDS

EXTERIOR MOUNTING OPTION

- Choice of Bronze, Silver or Black



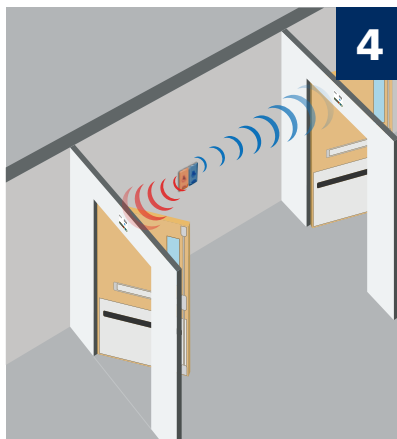
JAMB CAM

JAMB MOUNTED VIDEO CAMERA

- Full color, enhanced definition video with 480 x 720 (480p) resolution
- Wide angle lens for complete view of door and traffic flow



WIRELESS SOLUTIONS



4

900 MHZ SERIES

MOST COMPACT TRANSMITTERS AND RECEIVER ON THE MARKET

- Connects up to 500 feet (open-air transmission)
- DIP switch function settings and push button learn modes
- 1, 2, 3 and 4 button hand-held transmitters, plus an in-wall transmitter
- NEMA 4 rated handheld transmitters available
- **BEA also offers 433 MHz & 300 MHz frequencies**



ACCESS CONTROL SOLUTIONS

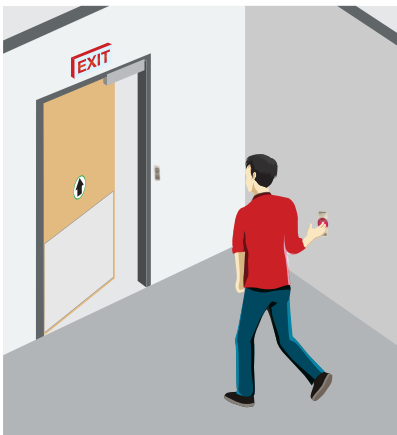


5

PNEUMATIC BUTTONS

2 TO 60 SECONDS, USER-DEFINED HOLD TIME

- Exceeds NFPA safety codes with respect to security button delay time
- Available in single and jamb size plates; buttons available in 1½ inch (standard) or 2 inch (large) sizes
- Available in a variety of combinations of color, text and logo upon request
- Tested to perform greater than 1 million operations



PIEZO BUTTONS

1 TO 40 SECOND, USER-ADJUSTABLE HOLD TIME

- Can be configured to fail-safe or fail-secure
- LED illumination can be customized to user preference
- Stainless steel faceplate and technology appropriate to withstand the rigors of harsh environments
- Vandal / tamper resistant design
- Tested to perform greater than 1 billion operations



6

UNIVERSAL KEYPADS

VERSATILE ACCESS CONTROL DEVICES

- Allows for up to 1010 individual user codes
- IP66 rating ideal for outdoor or harsh environments

KEYSWITCHES

ROBUST STAINLESS STEEL FACEPLATE

- Aluminum wall plate with tamper-resistant screws
- Available in jamb and single wall plates or double gang combo-plate
- Available with momentary or maintained contact

LOCKING DEVICES

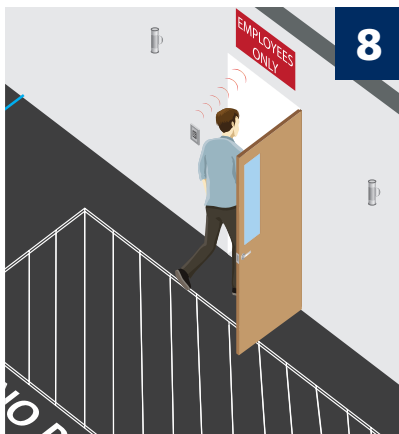


7

UL LISTED MAGLOCKS

INDUSTRY PROVEN ACCESS CONTROL DEVICES

- Built-in LED Bond Status Sensor
- Available with Door Status Sensor
- Available for single and double door applications and in 600 and 1200 lbs
- Field selectable 12 or 24 VDC
- Zero to 90 second re-lock timer

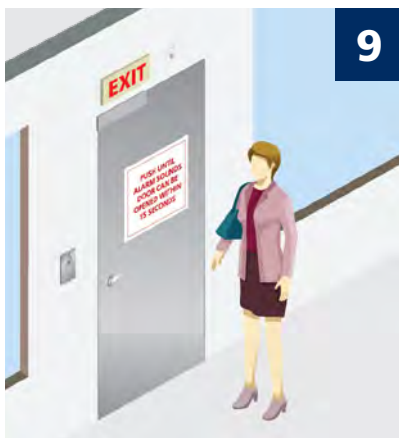


8

ELECTRIC STRIKES

CYLINDRICAL UNIVERSAL & RIM EXIT

- Three modular faceplates for the most common door types: hollow metal, aluminum and wood
- Accepts 0.50 inch or 0.625 inch latch projections - a perfect compliment for narrow style aluminum frames
- Conventional keeper design promotes even-load distribution in the event of a forced entry
- Reinforced housing reduces twisting on imperfect frames
- UL / ULC listed for up to 1500 lbs of static strength
- UL 294 listed



9

DELAYED EGRESS MAGLOCK KIT

FOR PERIMETER EXIT DELAY APPLICATIONS

- Double door (two single doors) can be synchronized
- Authorized egress time programmable zero to 15 seconds
- Selectable 30 second door prop alarm
- LED color and flashes can be customized
- Monitored fire alarm input
- Delayed Egress can be triggered with pressure on the door or with a REX input (or disabled completely)
- UL 294 listed

ACCESSORIES

BRACKETS

MAGLOCK BRACKET OPTIONS

- L & Z Brackets
- Glass Door Brackets
- Vertical Spacer
- Armature Housing
- Filler Bars



CONTROLLERS

PROGRAMMABLE 2- & 3-RELAY LOGIC MODULES

- 2-relay logic module with built-in 900 MHz wireless technology
- Programmable 3-relay logic module with 13 functions for sequencing doors with other devices (i.e., lights)

10



POWER SUPPLIES

UL LISTED

- Free standing enclosure for powering BEA sensors, locks and accessories
- Battery backup option available



SENSORS



11



12



13



14



15



16

R2E-100

UL 294 LISTED REQUEST-TO-EXIT SENSOR

- Adjustable tilt angle from zero to 10 degrees
- Adjustable detection range from 20 to 48 inches
- Low profile sensor mounts on or above the door frame



FLY KIT

COMPACT, VERSATILE REQUEST-TO-EXIT SENSOR

- DIP switches for user-defined settings
- Extended Relay Time (ERT) version is available for hold times of 15 or 30 seconds
- Packages include both ceiling and surface mount adapters



SUPERSCAN-T

DOOR-MOUNTED PRESENCE SENSOR

- Ideal for low energy door applications
- Capable of external monitoring



SPARROW

HIGHLY FLEXIBLE MOTION SENSOR

- Adjustable detection zones of 20 x 30 feet
- Mounting height from 6½ to 20 feet
- IP64 rated enclosure for harsh environments



LZR®-FLATSCAN SW

STANDALONE, DOOR-MOUNTED SWING DOOR SAFETY SYSTEM

- Ideal for low energy applications
- Leading edge safety extends the detection area beyond the leading edge of the door for enhanced safety
- Fully monitored internally, capable of external monitoring



LZR®-I30 / LZR®-S600

IDEAL FOR EXTERIOR PERIMETER DETECTION

- NEMA 4 / IP65 rated enclosure
- LZR®-I30: 30 x 30 feet maximum detection range
- LZR®-S600: 82 x 82 feet maximum detection range



FALCON EX

IDEAL FOR REFINING & VOLATILE ENVIRONMENTS

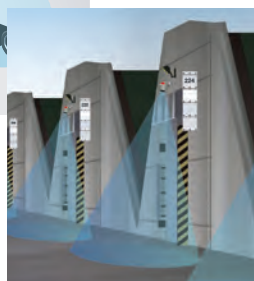
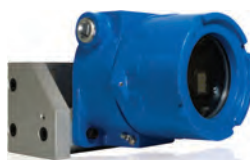
- 11 lb, explosion-proof / flame-proof housing
- Bidirectional, unidirectional approach and unidirectional depart microwave detection options
- Six modes of detection filtering for pedestrian and parallel traffic rejection

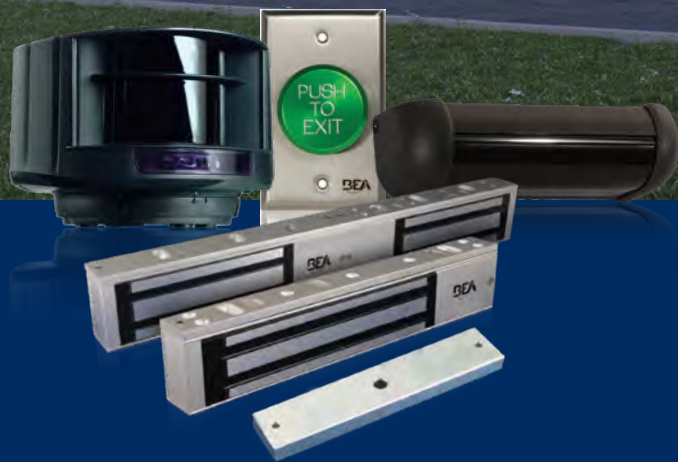
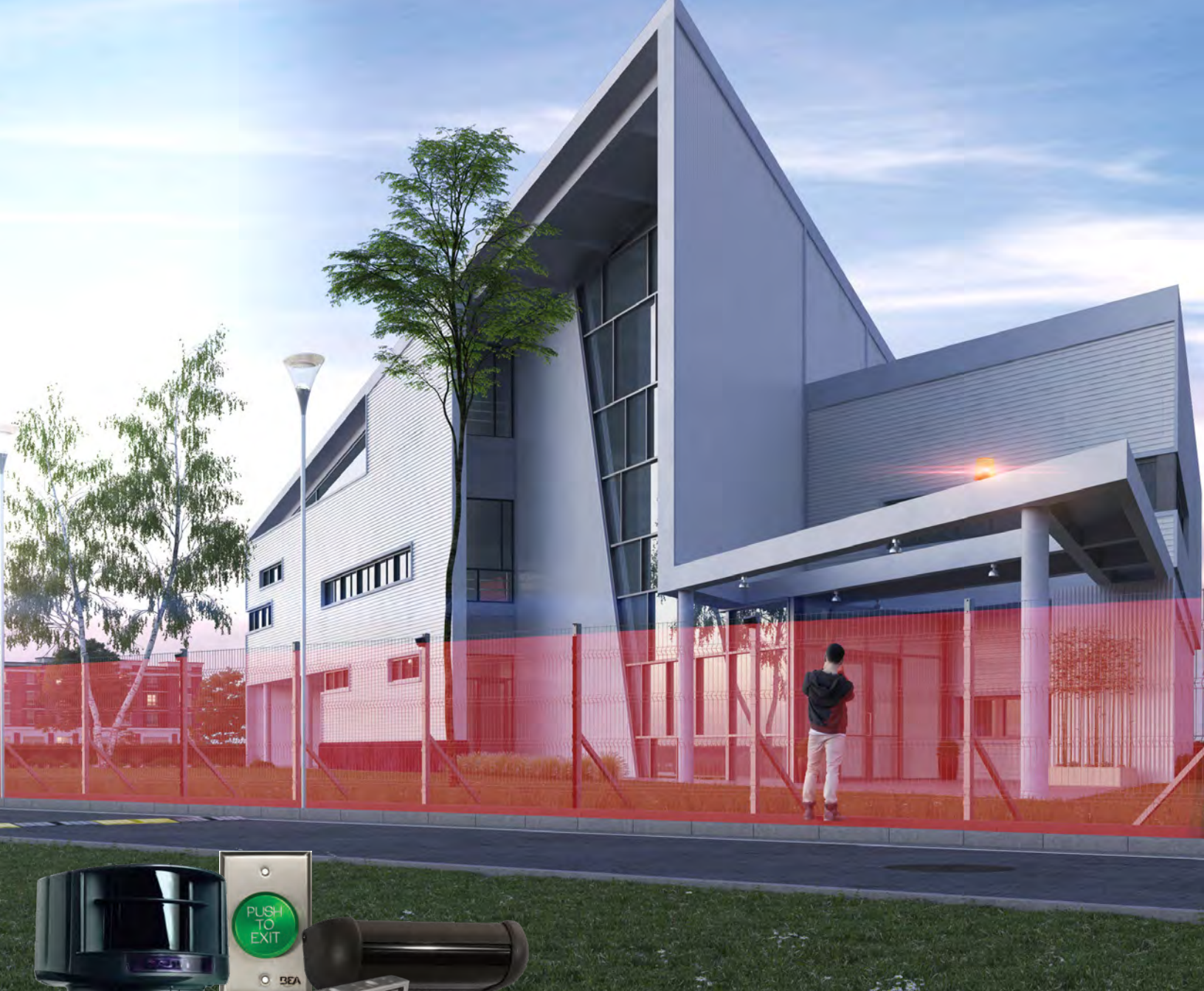


PHOENIX EX™

IDEAL FOR MANUFACTURING & MILITARY FACILITIES

- 11 lb, explosion-proof / flame-proof housing with integrated tamper alert switch
- Bidirectional, unidirectional approach and unidirectional depart microwave detection options





BEA Americas

RIDC Park West
100 Enterprise Drive
Pittsburgh, PA 15275-1213

Phone: 1.800.523.2462

Fax: 1.888.523.2462

Email: info-us@BEAsensors.com