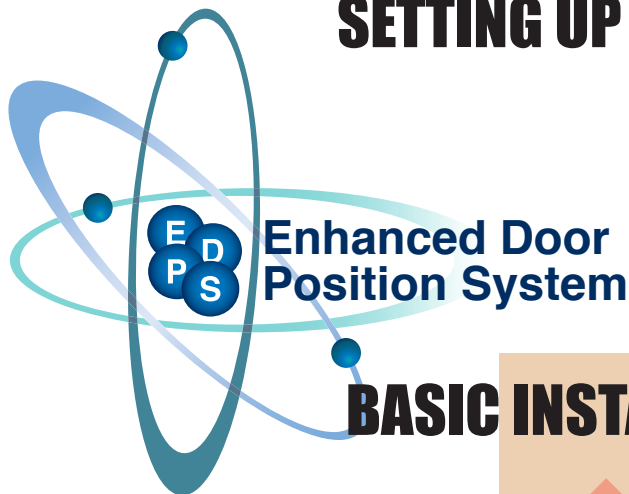


# SETTING UP THE EDPS



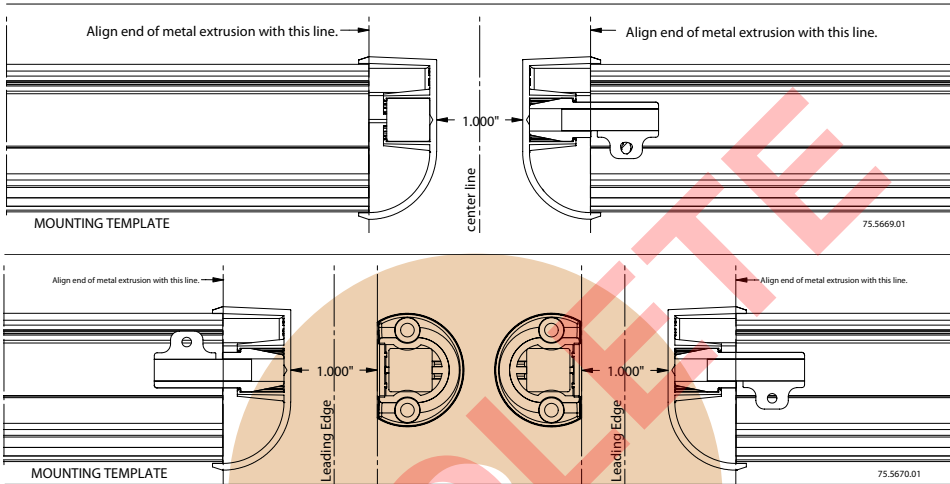
1. Install HUB ..... See UG pg. 2
2. Install On / Off / Hold Switch ..... See UG pg. 2
3. Install Bodyguard ..... See UG pg. 3
4. Install Eagle (optional) ..... See UG pg. 6
5. Install Push Plates (optional) ..... See UG pg. 6
6. Install Photo Beams (optional) ..... See UG pg. 7
7. Install Transformer\* ..... See UG pg. 7

**\*DO NOT POWER HUB AT THIS TIME!**

**Note:** UG refers to BEA  
Users Guide #75.5652

# INSTALL DOOR MOUNTED SENSORS

2



**Note:** Above templates are NOT to scale.

Use template provided to make extrusions approximately 1" apart.

For retrofits where the 1" apart cannot be obtained, please review Appendix C in the Users Guide (pg. 15)

Be sure to route EDPS harness to swing side extrusion.

Install the door mounted sensor into extrusion.

# INSTALL THE EDPS SENSOR

3



Snap the EDPS into place on the safety side of the door mounted extrusion.

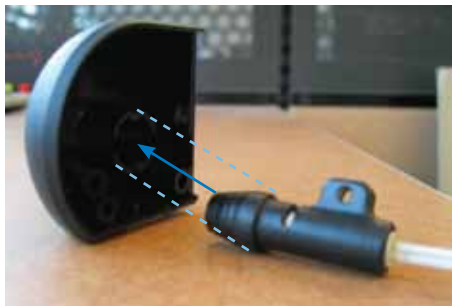


Plug the 10 pin connector from the wiring harness (20.5215) into the EDPS.

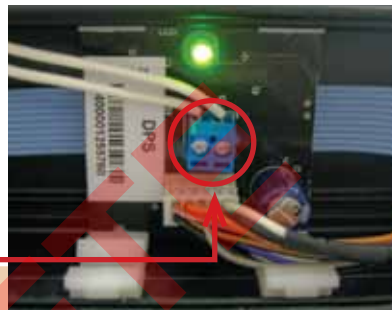
For additional help, see Users Guide (pg. 4)

# INSTALL THE HOME SWITCH

4



Snap the home switch into the end cap facing the magnet.



Wire the home switch into the EDPS.

## Single Door Installation

Magnet installed inside Surface Mount Adapter



Exploded



Installed

## Double Door Installation

Magnet installed inside Extrusion End Cap



Exploded



Installed

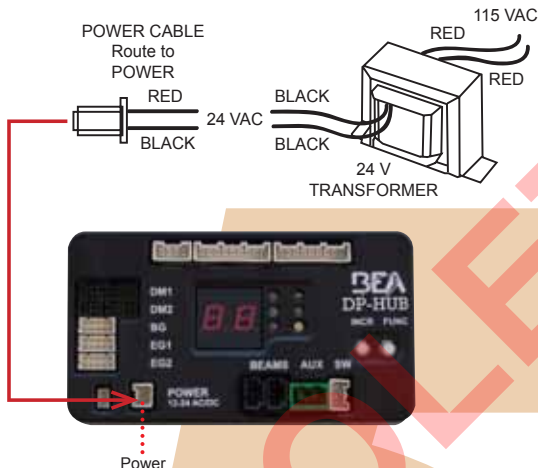
For additional help, review Users Guide (pg. 5)

# POWER THE DP-HUB AND CONFIGURE THE BODYGUARD'S SETTINGS





5

1

Plug power from transformer into socket labeled POWER on DP-HUB.

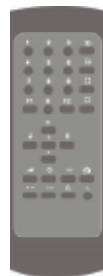


2

1. Unlock BodyGuard Sensor 
2. Set Output Configuration  to  Normally Closed
3. Lock Sensor by pressing Lock  twice

For help powering the DP-HUB, review Users Guide (pg. 7).

For help setting up the Bodyguard, review Users Guide (pg. 8).



# SET THE NUMBER OF DOORS AND SET THE NECESSARY PARAMETERS FOR THE DP-HUB

1



Press "FUNC" button until DP-HUB's display shows "Fd"

Press "INCR" button to set number of doors in system

Fd = 01

ONE DOOR

Fd = 02

TWO DOORS



2

For help setting number of doors, review Users Guide (pg. 8).

For help setting DP-HUB parameters, review Users Guide (pg. 11).

DISPLAYS	DESCRIPTION
Fd	01 = One door system 02 = Two door system
FL	01 = New lockout data 02 = Old lockout data
FR	00 = Normal Operation 01 = Knowing Act
Fb	00 = No Beams 01 = Beams Installed
F <sub>n</sub>	00 to 30 - Time in seconds (10 seconds)
F <sub>i</sub>	00 = Automatic Inhibit 01 = Manual Inhibit
F <sub>l</sub>	05 to 10 - Buffer in degrees (07 degrees)
FP	00 = Normal Operation 01 = Push and Go
Fh	00 to 30 - Time in seconds (01 seconds)
FS	00 = Standard Safety 01 = Advanced Safety

# PERFORM DOOR POSITION SYSTEM LEARN

7



After all programming of the DP-HUB is complete:

With orange HOME light on, press and hold the "INCR" and "FUNC" buttons until the blue LEARN light activates, and then release.

Once the  $L_n$  is displayed, activate the door. Continue to hold activation until doors are fully open, and then release the activation.

CAUTION: DP-HUB is NOT providing safety on the first cycle.



A successful learn should now display a  $dP$ .



Once the  $dP$  is displayed, activate the door a second time. Continue to hold activation until doors are fully open, and then release the activation.

If no errors occur, proceed to step 8. If errors occur, see step 16 of the users guide (pg. 9).

For additional help, see Users Guide (pg. 9)

# PERFORM A WALK TEST

8

Perform a walk test to ensure compliance with all applicable safety standards (i.e. ANSI A156.10) upon completion of installation



For additional help, see Users Guide (pg. 9)