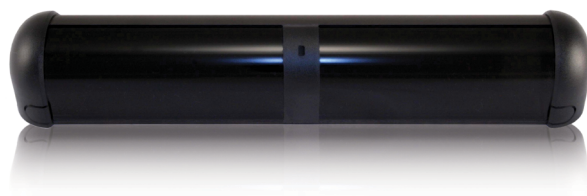




# BODYGUARD-T

OVERHEAD PRESENCE SENSOR  
FOR AUTOMATIC DOORS



## LEARN MORE



Click or scan

## TECHNOLOGY



## CERTIFICATIONS

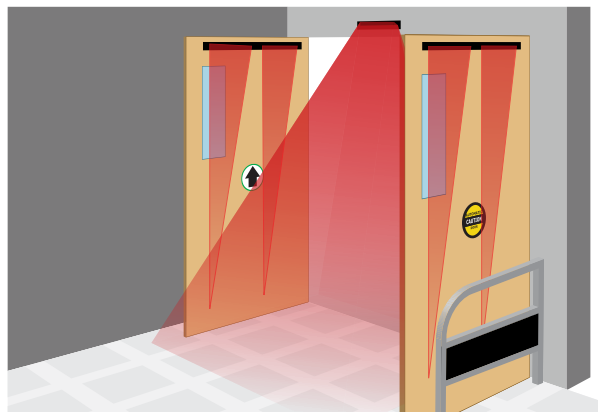


## DESCRIPTION

BEA's **BODYGUARD-T** is an overhead presence sensor designed for pedestrian automatic doors.

The **BODYGUARD-T** provides threshold protection during the door open state. It is designed to prevent a closed door from opening and an open door from closing when a person is in the detection zone.

This sensor is easy to install and adjustments can be made by using the BEA remote control.



### Overhead Presence Sensor

Versatile sensor can be used on single swing, simultaneous pair, dual egress and folding doors when coupled with an interface / lockout device

### Tailor For Application Needs

Adjustable tilt angle from 0° – 10°

### Customized Detection

Separate pattern width, depth and sensitivity for open and closed door states provide maximum flexibility

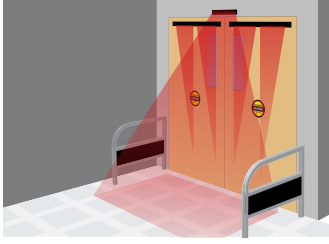
### Standards Compliant

Fully monitored internally, capable of external monitoring

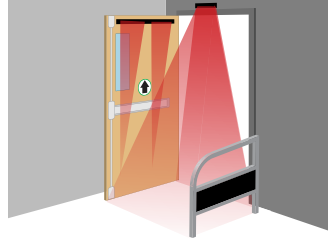
### Visible Indication

Visible LED indicates connection between sensor and door control

## APPLICATIONS



Double Swing



Single Swing

## TECHNICAL SPECIFICATIONS

|                                       |   |
|---------------------------------------|---|
| <b>Technology</b>                     | Active Infrared                                       |
| <b>Detection Mode</b>                 | Presence  |
| <b>Installation Height (variable)</b> | 9' 0" maximum (recommended: 6' 6" – 8' 0")            |
| <b>Mounting Angles</b>                |   |
| Bodyguard Only                        | 5°, 10° (factory default setting: 5°)                 |
| With Bodymount                        | 0°, 5°, 10°   |
| <b>Power Supply</b>                   | 12 – 24 VAC / VDC ±10%                                |
| <b>Frequency</b>                      | 50 – 60 Hz  |
| <b>Output</b>                         |   |
| Max. Contact Voltage                  | 60 VDC / 125 VAC                                      |
| Max. Contact Current                  | 1 A   |
| Max. Power Supply                     | 30 W (DC), 60 VA (AC)                                 |
| <b>Relay Hold Time</b>                | 0.5 – 9 s   |
| <b>Operating Temperature</b>          | -22 – 140 °F  |
| <b>Immunity</b>                       | Immune to electrical and radio frequency interference |
| <b>Cable</b>                          | 4'  |
| <b>Weight</b>                         | 1 lb 11 oz  |
| <b>Dimensions</b>                     | 12" (W) × 2" (H) × 2" (D)                             |
| <b>Material</b>                       | Aluminum & ABS plastic                                |
| <b>Housing</b>                        | Black anodized aluminum                               |

## PRODUCT SERIES

|  |  |   |
|--|--|---|
|  <p><b>10BODYGUARDT</b><br/>Overhead presence sensor</p> |  <p><b>10BODYMNT</b><br/>Spacer for BODYGUARD-T</p> |  <p><b>10BGQD</b><br/>Quick disconnect for BODYGUARD-T cable</p> |
|  <p><b>10URC</b><br/>Universal rain cover</p>            |  <p><b>10LO21</b><br/>Lockout module</p>            |  <p><b>10REMOTE</b><br/>BEA universal remote control</p>         |

**DISCLAIMER** Information is supplied upon the condition that the persons receiving it will make their own determination as to its suitability for their purposes prior to use. In no event will BEA be responsible for damages of any nature whatsoever resulting from the use of or reliance upon information from this document or the products to which the information refers. BEA has the right without liability to change descriptions and specifications at any time.

[WWW.BEASENSORS.COM](http://WWW.BEASENSORS.COM)



BEA AMERICAS / RIDC Park West / 100 Enterprise Drive / Pittsburgh, PA  
 T 1-800-523-2462 / F 1-888-523-2462 / E info-us@BEAsensors.com

A Halma company