



LZR-FLATSCAN S

COMPACT, SINGLE-CURTAIN, LASER SCANNER FOR DOOR, GATE, AND BARRIER APPLICATIONS

LEARN MORE



▲ click or scan

TECHNOLOGY



DESCRIPTION

BEA's **LZR®-FLATSCAN S** is a compact, single-curtain, LASER-based sensor designed for use on automatic industrial doors, gates, and barriers. Its precise technology ensures accurate object detection across the 18 ft × 18 ft field, making it capable of sensing people and vehicles, in both indoor and outdoor environments.

The **LZR®-FLATSCAN S** is housed in a robust, IP66 rated, metal enclosure. It can be installed in outdoor, industrial, and

other harsh environments.

Three visible LED spots provide accurate reference points that aid in adjusting the tilt angle. Parameter adjustments can only be made with a BEA **UNIVERSAL REMOTE CONTROL**.



Inductive Loop Alternative

Virtual presence loop ideal for applications where cutting ground for loops is prohibited, impossible, or expensive

Versatile Sensor Orientation

Left or right, horizontal or vertical sensor mounting allows for convenient sensor installation based on application needs

Compact Design

Low-profile solution reduces risk of wear and tear in vehicle applications

Robust Construction

Metal enclosure and IP66 rating protects sensor in harsh environments

Reduce Unwanted Detections

Fog filter and additional immunity settings allow for field adjustments to mitigate environmental interferences



APPLICATIONS



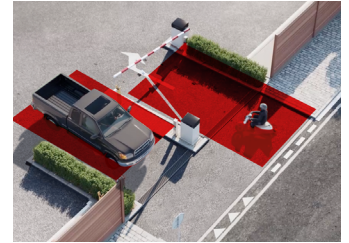
Small, High-Performance Doors



Pharmaceutical Doors



Slide / Swing Gates



Barrier Arm

TECHNICAL SPECIFICATIONS

TECHNOLOGY / PERFORMANCE

Technology	LASER sensor, time-of-flight measurement
Detection mode	presence
Max. detection range	max. 18' x 18' (13 1/8' @ 5% reflectivity)
Opening angle	90°
Tilt angles	±3° (with bracket)
Emission characteristics	wavelength 905nm; max. output pulse power 25W (CLASS 1) wavelength 635nm; max. output CW power 0.95mW (CLASS 2) visible spot
Angular resolution	0.23° (400 spots within 90°)
LEDs	1 tri-colored LED: detection / output status

ELECTRICAL

Supply voltage*	12 – 24 VDC ±15%
Power consumption	≤ 2.3W, peak current: 1A
Response time	max. 50ms (+ output activation delay)
Output	1 opto (galvanic isolation - polarity free)
max. switching voltage	42 VAC/VDC
max. switching current	100mA
	1 relay (free of potential contact)
max. contact voltage	42 VAC/VDC
max. contact current	1A (resistive)
max. switching power	30W DC / 60 VAC

PHYSICAL

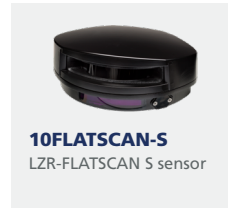
Dimensions	5" (L) x 3 1/2" (H) x 2" (D) (without bracket)
Color	black
Protection degree	IP66 (IEC 60529)
Temperature range (when powered)	-22 – 140 °F (-30 – 60 °C)
Humidity	0 – 95% non-condensing
Vibrations	< 2G

COMPLIANCE

Compliance	IEC 60825-1, IEC 60950-1, IEC 61000-6-2, IEC 61000-6-3, IEC 60529:2001
-------------------	--

* If only VAC power is available, a 12V transformer paired with a rectifier must be used. Do not use a 24V transformer and rectifier as this will cause damage to the product.

PRODUCT SERIES



10FLATSCAN-S
LZR-FLATSCAN S sensor

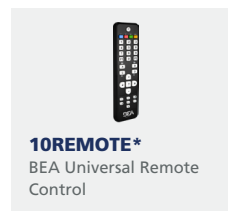
ACCESSORIES



10FSSMB*
LZR-FLATSCAN S bracket

* Required for installation (sold separately).

RELATED PRODUCTS



10REMOTE*
BEA Universal Remote Control



10PSMDR2024
DIN rail power supply,
100 – 240 VAC / 24 VDC



10PSST242
Plug-in power supply

* Required for installation and adjustment (sold separately).

DISCLAIMER Information is supplied upon the condition that the persons receiving it will make their own determination as to its suitability for their purposes prior to use. In no event will BEA be responsible for damages of any nature whatsoever resulting from the use of or reliance upon information from this document or the products to which the information refers. BEA has the right without liability to change descriptions and specifications at any time.

WWW.BEASENSORS.COM



BEA AMERICAS / RIDC Park West / 100 Enterprise Drive / Pittsburgh, PA
T 1-800-523-2462 / F 1-888-523-2462 / E info-us@BEAsensors.com

A Halma company