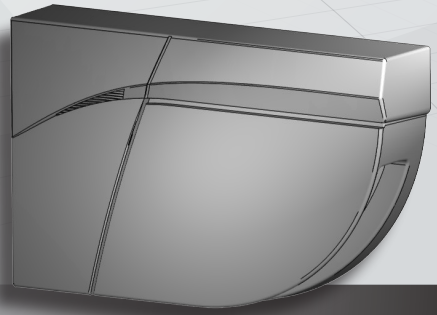




Visit website for  
available languages  
of this document.



EN



# LZR<sup>®</sup>-FLATSCAN SW

SAFETY SENSOR FOR FULL- AND LOW-ENERGY  
AUTOMATIC SWING DOORS



FULL-ENERGY KITS

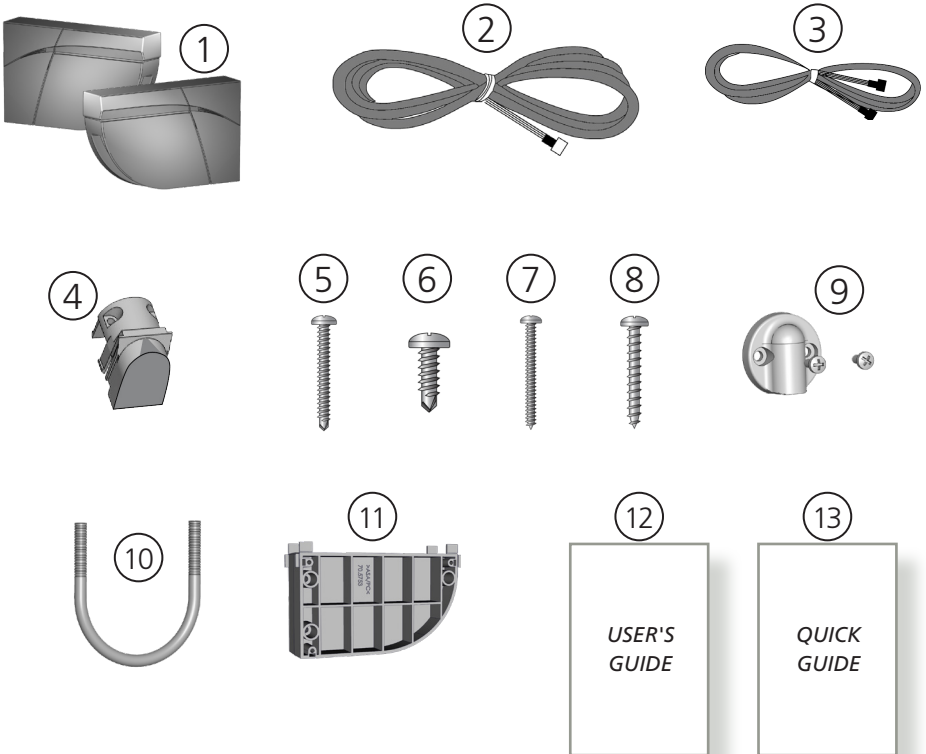
10LZRFLATSCAN-SWB / -SWS / -SWW

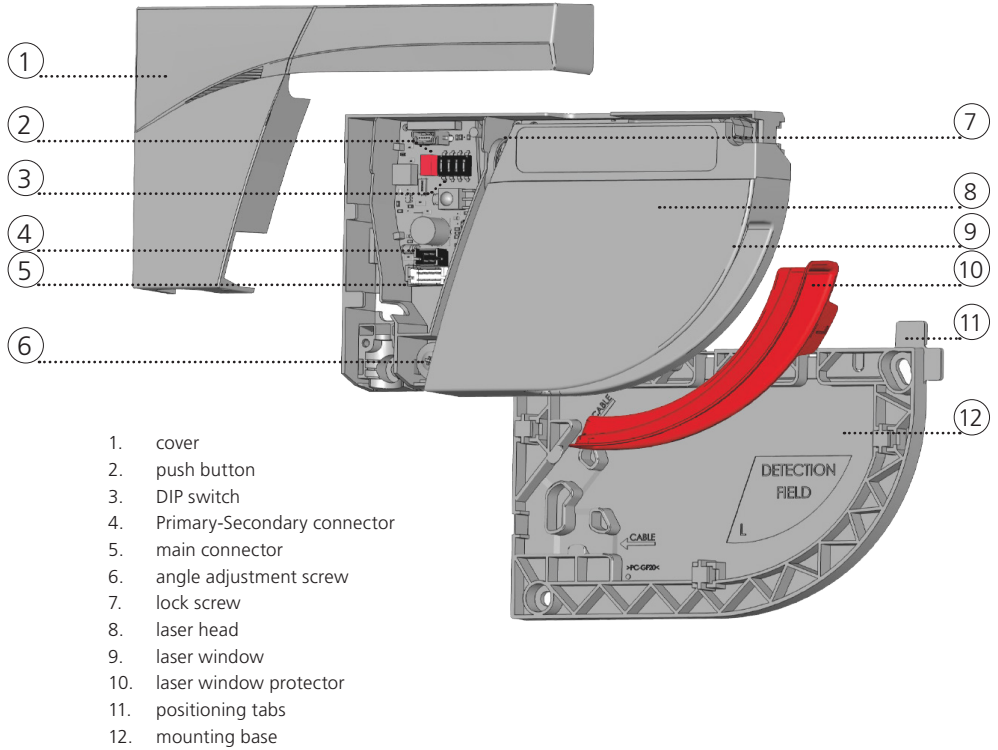
- 1. Sensors, left **AND** right  
Left (10LZRFLATSCAN-LB / -LS / -LW)  
Right (10LZRFLATSCAN-RB / -RS / -RW)
- 2. Control harness (20.5416)
- 3. Primary/Secondary harness (35.1329)
- 4. Entry clamp (70.2022)
- 5. Screws (PHP) (x3) (50.0048)
- 6. Screws (self-drilling) (x6) (50.1818)
- 7. Screws, wood (PHP) (x6) (50.5282)
- 8. Screws, wood (PHP) (x3) (50.5319)
- 9. Jamb cap kit (55.0001)
- 10. Flexible tubing (70.0202)
- 11. Spacer (70.5753)
- 12. User's Guide (75.5947)
- 13. Quick Guide (75.5959)

LOW-ENERGY KITS

10LZRFLATSCAN-LELB / -LELS / -LELW  
10LZRFLATSCAN-LERB / -LERS / -LERW

- 1. Sensors, left **OR** right  
Left (10LZRFLATSCAN-LB / -LS / -LW)  
Right (10LZRFLATSCAN-RB / -RS / -RW)
- 2. Control harness (20.5416)
- 4. Entry clamp (70.2022)
- 5. Screws (PHP) (x3) (50.0048)
- 6. Screws (self-drilling) (x4) (50.1818)
- 7. Screws, wood (PHP) (x3) (50.5282)
- 8. Screws, wood (PHP) (x3) (50.5319)
- 9. Jamb cap kit (55.0001)
- 10. Flexible tubing (70.0202)
- 11. Spacer (70.5753)
- 12. User's Guide (75.5947)
- 13. Quick Guide (75.5959)












## LED SIGNALS

### COLORS

-  Relay 1
-  Relay 2
-  Error

### BEHAVIORS

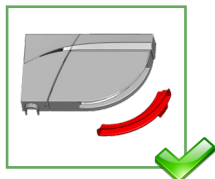
-  LED flashes
-  LED flashes x times
-  LED flashes slowly
-  LED flashes quickly
-  LED flashes red/green
-  Learn in progress  
Exit the zone and wait
-  LED is off

# READ BEFORE BEGINNING INSTALLATION/PROGRAMMING/SET-UP

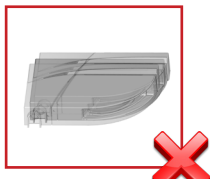


**THIS SENSOR IS POWERED BY DC VOLTAGE ONLY.**  
SEE PAGE 7 (step 7) FOR INFORMATION REGARDING USE OF A RECTIFIER.

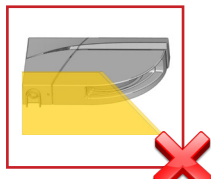
## INSTALLATION TIPS



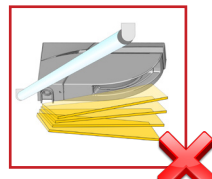
Remove the laser window protection before teach-in and commissioning.



Avoid vibrations.



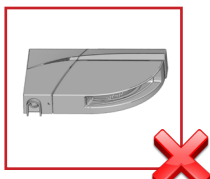
Do not cover the laser window.



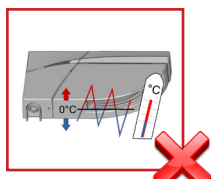
Avoid moving objects and light sources in the detection field.



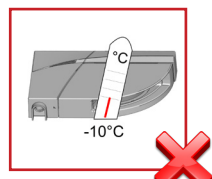
Avoid the presence of smoke and fog in the detection field.



Avoid condensation.

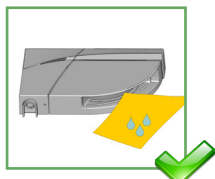


Avoid exposure to sudden and extreme temperature changes.



Ensure power to the sensor in areas where the temperature can reach below -10 °C.

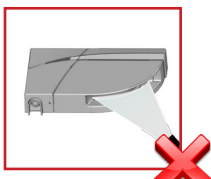
## MAINTENANCE TIPS



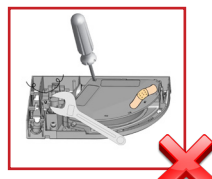
When needed, wipe the laser window only with a soft, clean and damp microfiber cloth.



Do not use dry or dirty towels or aggressive products to clean the laser window.

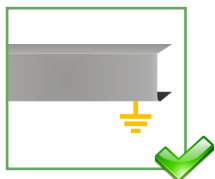


Avoid direct exposure to high-pressure cleaning.



The warranty is invalid if unauthorized repairs are made or attempted by unauthorized personnel.

## SAFETY TIPS



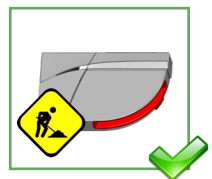
The door control unit and the header cover profile must be correctly grounded.



Only trained and qualified personnel are recommended to install and set up the sensor.



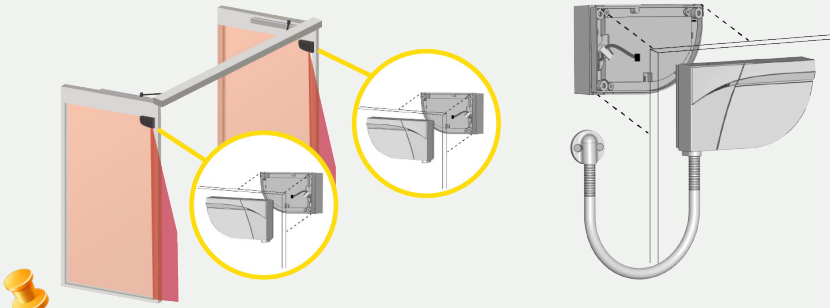
Always test for proper operation before leaving the premises.



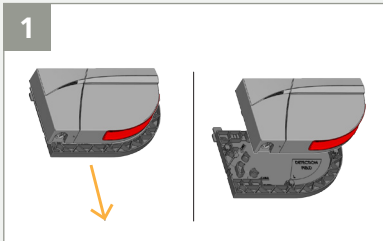
Do not remove the laser window protection if building works are still in progress on site.

# 1 MOUNTING

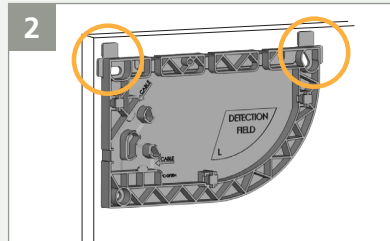
**⚠** Full-energy applications require a sensor on each side of the door in order to comply with ANSI 156.10. Low-energy applications may use only one sensor on the approach side.



For applications requiring a spacer, first mount spacer to door, and then mount mounting base to spacer.

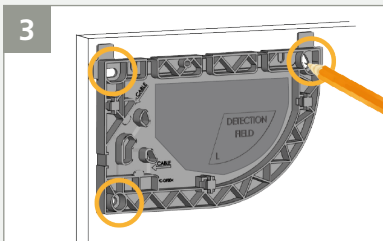


Slide the mounting base off of the sensor.

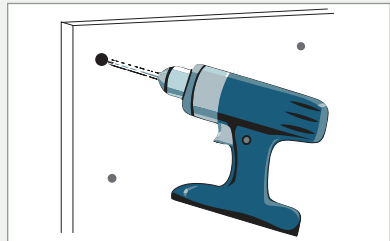


Position the mounting base on the door. Use the positioning tabs to align the base correctly.

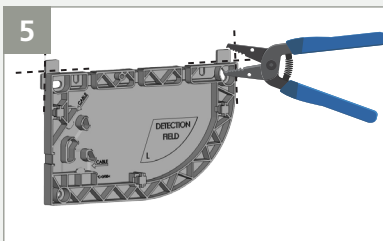
**⚠** When mounting the mounting base, ensure the sensor will not interfere with door movement. If the sensor isn't correctly positioned, it could be damaged during door opening/closing.



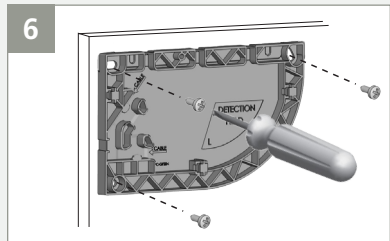
Mark the pilot holes on the door. You can also use the inner surface of the mounting base to fasten the screws.



Drill pilot holes  $\frac{1}{8}$ " for sensor mounting.



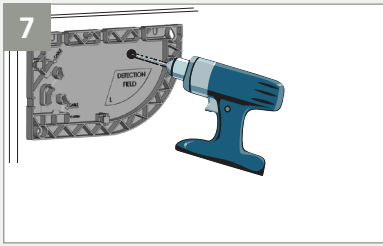
Using a wire cutter, remove the positioning tabs from the mounting base.



Fasten the 3 screws using a screwdriver.

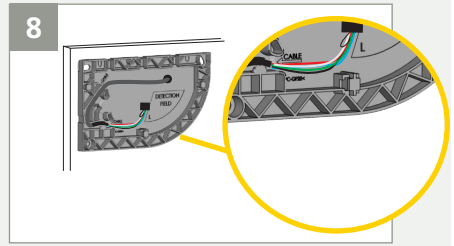
# 1 MOUNTING (cont.)

If installing only one sensor (low-energy, approach side), skip steps 7, 8, 10, 11, 12, and 13.

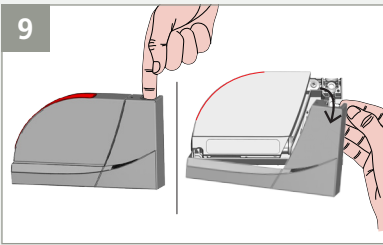


Drill a  $\frac{5}{16}$ " pass-thru hole in the mounting base and door. Sand down any rough edges.

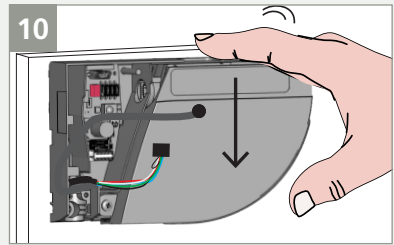
For UL10 compliance, ensure the hole is offset a minimum of 1 inch from the hole on the other side of the door.



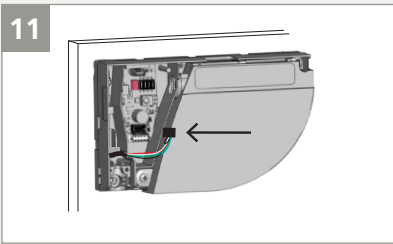
Pass the Primary/Secondary cable through the hole and then position the cable in the notch of the mounting base and secure.



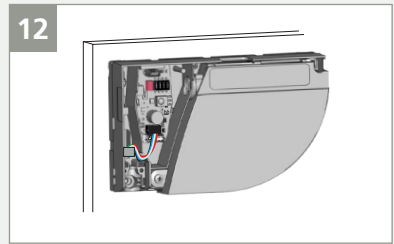
Remove the sensor cover by inserting your finger and then pull firmly towards you.



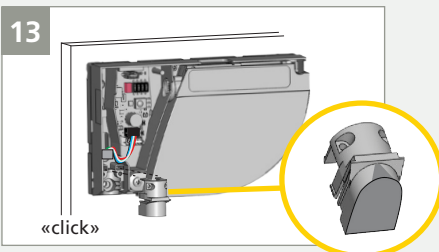
Pass the cable through the hole on the back of the sensor and secure the sensor to the mounting base by sliding it downward.



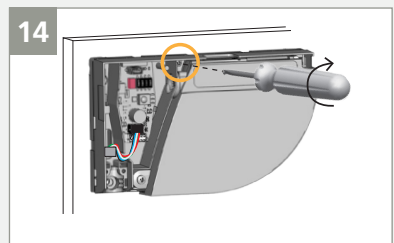
Connect the black plug to the black connector.



Ensure all wires are secured within the notch to avoid damage from the cover.

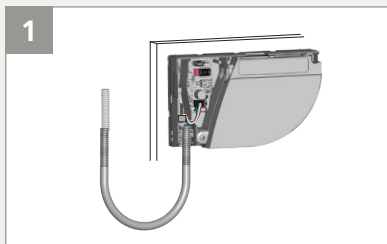


Use a plug to close the Secondary sensor.

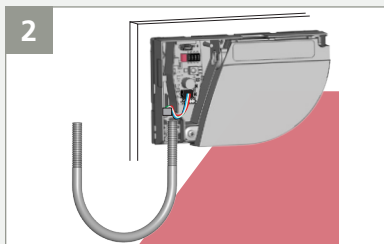


Secure the lock screw to avoid vibrations during door movement.

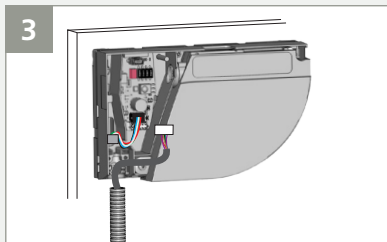
## 2 WIRING



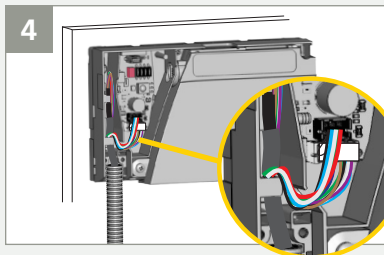
1 Determine the appropriate length for the door loop.



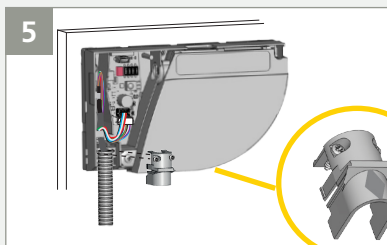
2 Cut excess door loop to avoid obstructions.



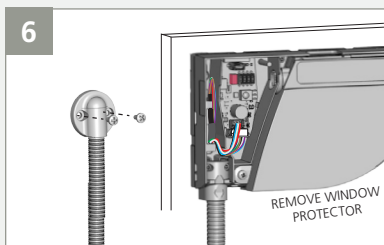
3 Pass power cable through door loop and connect white plug to white connector. *Ensure that the loop does not interfere with the sensor view.*



4 Create a loop with the wires of the power cable and pass them through the notch as indicated. Use the other part of the cable to block the wires.

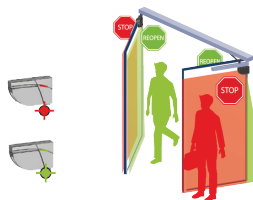
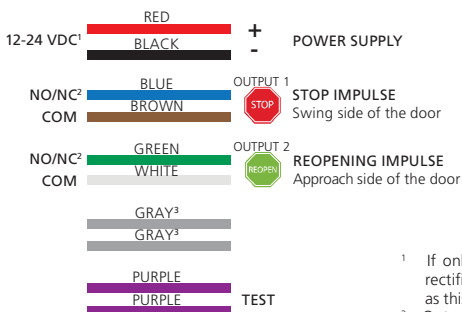


5 Secure the door loop to the sensor, using the clamp. Secure the 2 screws to avoid pulling out the cable.



6 Tighten the other side of the door loop using the cable cap and pass through the remaining length of the power cable towards the door controller.

7 **Cut the power cable to the correct length, strip the 10 wires, and connect as indicated above.**



<sup>1</sup> If only VAC power is available, a 12V transformer paired with a rectifier must be used. Do not use a 24V transformer and rectifier as this will cause damage to the product.

<sup>2</sup> Output status when sensor is operational (can be NO or NC; NO=default). See page 10.

<sup>3</sup> Not used.

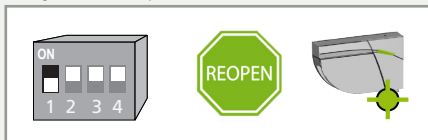
### 3 DIP SWITCHES

#### ON (switch ↑)

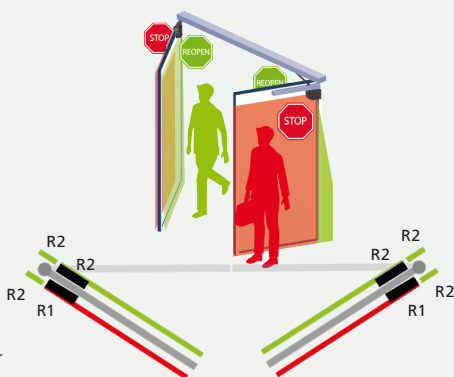


RELAY 1: STOP-impulse on swing side of door

#### OFF (switch ↓)



RELAY 2: REOPENING-impulse on approach side of door



ORANGE



GREEN



OFF

> 3 sec.

After changing a DIP switch, the orange LED flashes.

A LONG push on the push button confirms the settings.

Afterwards, a number of green flashes (x) indicates the number of connected sensors (x).

### 4 TEACH-IN

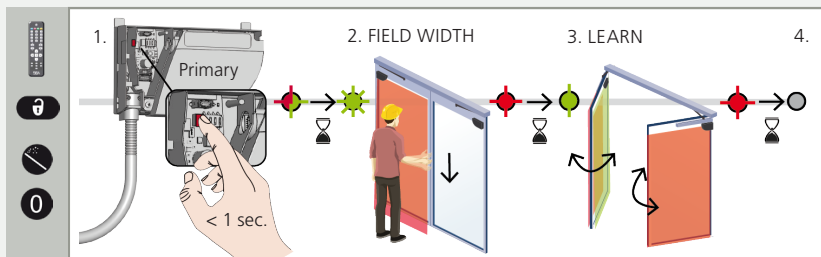


Before launching a teach-in, ensure the following:

- door is closed (use Service Mode if needed – see page 8)
- when in low-energy applications, caution is taken related to a static-mode learn (see Appendix 2)
- both relays are connected to door control and Primary/Secondary cable is connected between sensors
- detection field is free of environmental obstructions, objects, and people
- laser window protector is removed
- **verify the relay output setting (see page 10)**

**NOTE:** A teach-in on the Primary configures both the Primary and the Secondary. A teach-in on the Secondary only configures the Secondary. In case the Primary and Secondary sensor are not aligned, first launch a teach-in on the Primary and then on the Secondary.

1. Press the Primary sensor push-button briefly. The LED will begin quickly flashing red/green. When installing the sensor on a pair of doors, repeat this on the second Primary sensor.
2. When both sensors flash green, position yourself in front of the door and stretch out your arm in front of you. Make an up-and-down motion at the leading-edge to mark the limit of the detection zones. The LED will flash red while calculating the width of the door leaves.
3. When the sensors flash green again, remove yourself from the detection field and cycle the door open to allow the sensors to learn the environment. The sensors will flash red during the closing of the door.
4. Once the door is completely closed again and the LED is off, the teach-in is complete.

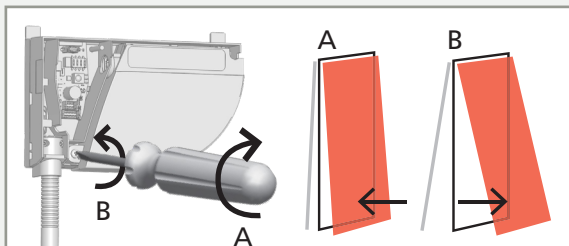




## 5 TESTING AND ADJUSTING



Check the correct positioning of the safety fields by walk-testing according to ANSI 156.10 standards.



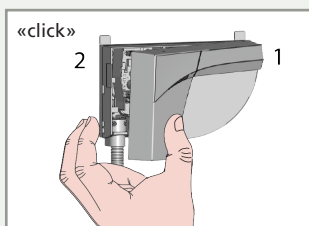
If necessary, adjust the tilt angle of the laser curtain by turning the tilt angle adjustment screw (from 2° to 10°).



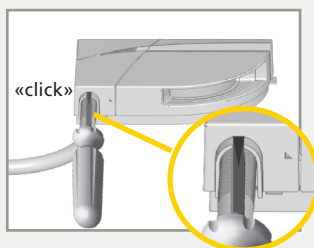
Always launch a teach-in and test the correct positioning of the detection fields after making adjustments to the angle, sensor position, or environment.

Verify that the sensor correctly detects based upon the ANSI 156.10 walk test. Make appropriate adjustments to the sensor and/or door control, if necessary, to ensure that the system is ANSI-compliant.

## 6 FINAL STEPS



Apply the cover starting on the narrow side. Do not hesitate to push.

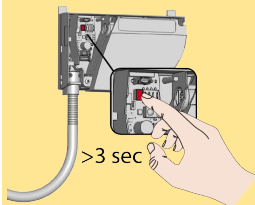


To remove the cover, position a screwdriver in the notch and pull upwards until the cover loosens.

Watch our LZR-FLATSCAN SW tutorial online: [bea-flatscan.com/tutorial](http://bea-flatscan.com/tutorial)



## ! SERVICE MODE



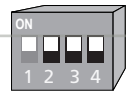
Service Mode **deactivates all detection fields** for 15 minutes and can be useful during an installation, a mechanical learn of the door, or maintenance work.

- To enter Service Mode, push and hold the button for at least 3 seconds. The LED will turn off.
- To exit Service Mode, push and hold again for at least 3 seconds.

Service Mode is deactivated automatically when a teach-in is launched.



## ADDITIONAL DIP SWITCH SETTINGS



		ON	OFF	
DIP 2	ENVIRONMENT	standard	critical	Switch to CRITICAL when external disturbances are likely to cause unwanted detections (min. obj size, immunity, and uncovered zone are increased).
DIP 3	OUTPUT CONFIGURATION	N.O./N.O. <sup>1</sup>	N.C./N.C. <sup>1</sup>	Settings for this DIP switch must be set on the Primary sensor (i.e. the sensor connected to the door control).
DIP 4	PINCH ZONE	on	off	Switch to OFF when the hinge area does not need to be secured and objects can cause unwanted detections.

### NOTES:

1. RELAY 1 / RELAY 2

After changing a DIP switch, the orange LED flashes. A LONG push on the push button confirms the settings. Afterwards, a number of green flashes (x) indicates the number of connected sensors (x).

> 3 sec.

## ADDITIONAL REMOTE CONTROL SETTINGS

= FACTORY VALUE



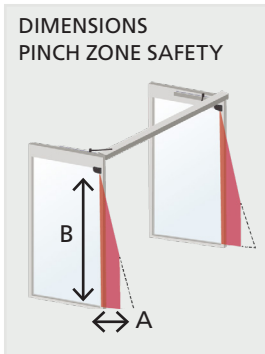
**CL** ↔ 000 001 - 157

no field 157 in

**DL** ↔ 000 001 - 157

no field 157 in

A teach-in overwrites these values automatically.



**DIP 4 must be set to ON to modify settings using the remote control.**

**AL** ↔ 000 001 - 040\*

no field 15 in

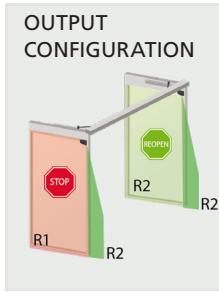
\* The actual dimensions depend on the mounting height (40 in at 13 ft)

**BL** ↔ 000 001 - 157

no field 157 in

A teach-in overwrites these values automatically.

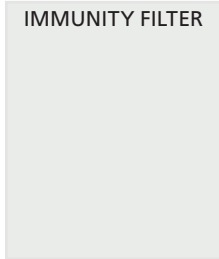
## ADDITIONAL REMOTE CONTROL SETTINGS



**DIP 3 must be set to ON to modify settings using the remote control.**

	1	2	3	4	
R1	NO	NC	NC	NO	NO POWER
R2	NC	NO	NC	NO	NO DETECTION
					DETECTION

NO = normally open  
NC = normally closed



**DIP 2 must be set to ON to modify settings using the remote control.**

Increase to filter out external disturbances.

	1	2	3	4	5	6	7	8	9
	low	>	>	>	>	>	>	>	high

The reaction time increases significantly between value 5 and 9.

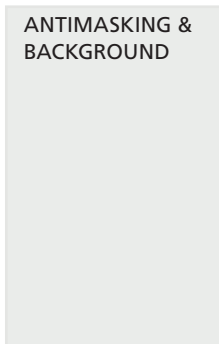


**DIP 2 must be set to ON to modify settings using the remote control.**

Increase in case of environmental obstructions.

F2	1	2	3	4	5	6	7	8	9
	0.75	1.5	2.25	3.0	4.0	4.75	5.5	6.25	7.0

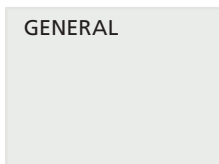
Measured in inches, in specific conditions and dependent on application and installation.



**Antimasking:** protective function which detects an unwanted object nearby the laser window masking the vision field.

**Background:** reference point in the detection field of the sensor. If no background is present, switch to off.

	0	1	2	3
	OFF	OFF	ON	ON
	OFF	ON	OFF	ON



	0	8	9
	teach-in	full reset	partial reset
	see page 7	factory reset of all values	factory reset of all values except field dimensions and output configurations

## HOW TO USE THE REMOTE CONTROL



After unlocking, the red LED flashes and the sensor can be adjusted by remote control.



If the red LED flashes quickly after unlocking, you need to enter an access code from 1 to 4 digits. If you do not know the access code, **cycle the power**. During 1 minute, you can access the sensor without introducing any access code.



To end an adjustment session, always lock the sensor.



It is recommended to use a different access code for each sensor in order to avoid changing settings on both sensors at the same time.

### SAVING AN ACCESS CODE

The access code is recommended for sensors installed close to each other.



### DELETING AN ACCESS CODE



Enter the existing code

### ADJUSTING ONE OR MORE PARAMETERS



### CHECKING A VALUE



x = number of flashes = value of the parameter

$\begin{matrix} \text{green} & \text{orange} & \text{green} & \text{orange} & \text{green} \\ \text{2x} & \text{1x} & \text{3x} & \text{1x} & \text{5x} \end{matrix}$  = field width: 2.35 m

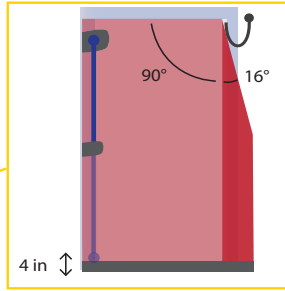
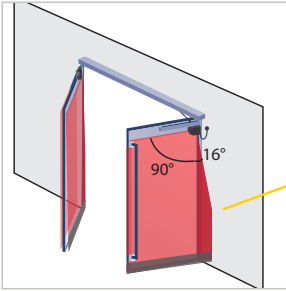
### RESTORING TO FACTORY VALUES



full reset

partial reset

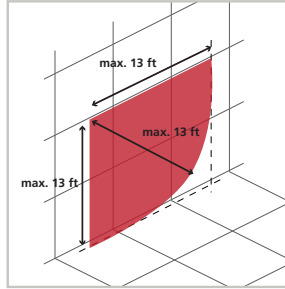
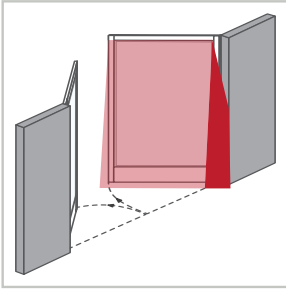
## DETECTION FIELDS



DOOR LEAF SAFETY  
Typ. object size: 4 inches at 13 feet

PINCH ZONE SAFETY  
Typ. object size: 3/4 inch at 13 feet

UNCOVERED ZONE  
*adjustable by remote control*  
factory value: 4 inches












**See the chart in Appendix 1 for door height/width combinations that provide full coverage of the face of the door.**

## TROUBLESHOOTING



Determine if the problem is related to the sensor or the door controller by activating Service Mode (no safety) and then launch a door cycle. If the door cycle is completed successfully, check the sensor. If not, verify the door controller or wiring.

 	The RED or GREEN LED is ON sporadically or permanently and the door does not react as expected.	Bad teach-in	Launch a new teach-in (closed door).
		Unwanted detections (due to environment or external conditions)	Make sure the flexible cable does not cause detections.
			Verify if the laser window is dirty and clean it carefully with a damp and clean microfiber cloth if necessary (attention: the surface of the laser window is delicate)
Switch DIP 2 to off (critical environment).			
	The sensor does not react at power-on.	Inverted power supply	Check wiring (red +, black -).
		Faulty cable	Replace cable
		Faulty sensor	Replace sensor
	The sensor does not react when powered.	Test error	Check wiring between purple wires.
		The service mode is activated.	Press the push button for at least 3 seconds to exit the service mode.
	It is not possible to adjust a setting by remote control.	Wrong DIP switch position.	Adjust the required DIP switches to ON.
	The RED LED flashes quickly when unlocked.	The sensor is protected by a password.	Enter the right password. If you forgot the code, cut and restore the power supply to access the sensor without entering a password within 1 minute.
	The ORANGE LED is on permanently.	The sensor encounters a memory problem.	Replace sensor.
	The ORANGE LED flashes quickly.	DIP switch setting awaiting confirmation.	Confirm the DIP switch setting: long push on the push button.
	The ORANGE LED flashes 1 x every 3 seconds.	The sensor signals an internal fault.	Cut and restore power supply. If orange LED flashes again, replace sensor.
	The ORANGE LED flashes 2 x every 3 seconds.	Power supply is out of limit.	Check power supply (voltage).
		Reduce the cable length or change cable.	
	The ORANGE LED flashes 3 x every 3 seconds.	Internal temperature is too high.	Protect the sensor from any heat source (sun, hot air...)
		Communication error between sensors	Check wiring between Primary and Secondary sensors.  Check wiring between interface card and laser head.

## TROUBLESHOOTING



The ORANGE LED flashes 4 x every 3 seconds.

The sensor does not see its background.

Using the remote control, set the background to 0 (off, deactivates background).

Something close to the sensor is masking part of the detection field.

Make sure the laser window is not scratched.  
If it is, replace sensor.

Remove all masking elements (insects, spider web, door loop, window protection).

Verify if the laser window is dirty and clean it carefully with a damp and clean microfiber cloth if necessary (attention: the surface of the laser window is delicate)

Switch antimasking setting to off (attention: no conformity to DIN 18650 or EN 16005).



The ORANGE LED flashes 5 x every 3 seconds.

Teach-in error

Check whether all teach-in requirements are fulfilled (see page 7) and launch a new teach-in (closed door).

Adjust the tilt angle of the laser curtain and launch a new teach-in (closed door).

Permanent faulty measurements of door position.

Launch a new teach-in (closed door).

If orange LED flashes again, contact BEA.



The ORANGE LED flashes 6 x every 3 seconds.

Sporadic faulty measurements of door position.

Clear field and wait until the door closes.

If the door does not close, cut power supply and restore it once the door is fully closed.

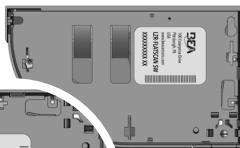
Launch a new teach-in (closed door).

Can't find your answer? Visit [www.beainc.com](http://www.beainc.com) or scan QR code for Frequently Asked Questions!



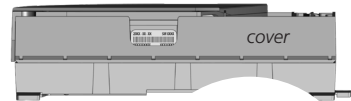
Before contacting BEA Technical Support, locate the serial and CAN numbers of your sensor.

### SERIAL NUMBER

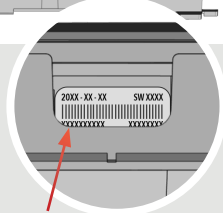


view: back of sensor

### CAN NUMBER



view: top of sensor



# TECHNICAL SPECIFICATIONS

## TECHNOLOGY / PERFORMANCE

<b>Technology</b>	LASER scanner, time-of-flight measurement
<b>Detection mode</b>	Presence
<b>Max. detection range</b>	13' (diagonal) with reflectivity of 2% e.g. at 5' width, max. H = 12'
<b>Opening angle</b>	
door leaf safety	90°
pinch zone safety	16°
<b>Angular resolution</b>	
door leaf safety	1.3°
pinch zone safety	0.2°
<b>Tilt angles</b>	2 – 10° (without mounting bracket)
<b>Typ. min. object size</b>	
door leaf safety	4" @ 13' (in proportion to object distance, DIP 2 = ON)
pinch zone safety	3/4" @ 13' (in proportion to object distance, DIP 2 = ON)
<b>Min. door leaf speed</b>	2°/sec
<b>Emission characteristics (IEC 60825-1)</b>	IR LASER: wavelength 905 nm; output pulse power 25 W; Class 1

## ELECTRICAL

<b>Supply voltage *</b>	12 – 24 VDC ±15%
<b>Power consumption</b>	< 2 W
<b>Response time</b>	
door leaf safety	max. 50 ms
pinch zone safety	max. 90 ms
<b>Test input</b>	30 VDC (max. switching voltage) low < 1 V      high > 10 V (voltage threshold)
<b>Output</b>	2 electronic relays (galvanic isolation - polarity free)
max. switching voltage	42 VAC/VDC
max. switching current	100 mA

## PHYSICAL

<b>Dimensions</b>	5 1/2" (L) × 3 1/8" (H) × 1" (D) mounting base: D + 1/4"
<b>Material - Color</b>	PC/ASA - black, silver, or white
<b>Degree of protection</b>	IP54 (IEC 60529)
<b>LED signals</b>	red = swing-side detection green = approach-side detection yellow = error
<b>Temperature range</b>	-22 – 140 °F (if powered)
<b>Humidity</b>	0 – 95% non-condensing
<b>Vibrations</b>	< 2 G

## COMPLIANCE

<b>Compliance</b>	ISO 13849-1 PI "d"/ CAT2; IEC 60825-1; IEC 60950-1; IEC 61000-6-2; IEC 61000-6-3; IEC 62061 SIL 2; UL10 (black material only) – file # R39071
-------------------	---

\* This sensor is powered by DC voltage only. If only VAC power is available, a 12V transformer paired with a rectifier must be used. Do not use a 24V transformer and rectifier as this will cause damage to the product.

*Specifications are subject to change without prior notice.  
All values measured in specific conditions.*



## APPENDIX 1: DOOR HEIGHT/WIDTH COMBINATIONS

DOOR WIDTH (feet)

	1	1.5	2	2.5	3	3.5	4	4.5	5	5.5	6	6.5	7	7.5	8	8.5	9	9.5	10	10.5	11	11.5	12	12.5	13
<b>1</b>	1.41	1.80	2.24	2.69	3.16	3.64	4.12	4.61	5.10	5.59	6.08	6.58	7.07	7.57	8.06	8.56	9.06	9.55	10.05	10.55	11.05	11.54	12.04	12.54	13.04
<b>1.5</b>	1.80	2.12	2.50	2.92	3.35	3.81	4.27	4.74	5.22	5.70	6.18	6.67	7.16	7.65	8.14	8.63	9.12	9.62	10.11	10.61	11.10	11.60	12.09	12.59	13.09
<b>2</b>	2.24	2.50	2.83	3.20	3.61	4.03	4.47	4.92	5.39	5.85	6.32	6.80	7.28	7.76	8.25	8.73	9.22	9.71	10.20	10.69	11.18	11.67	12.17	12.66	13.15
<b>2.5</b>	2.69	2.92	3.20	3.54	3.91	4.30	4.72	5.15	5.59	6.04	6.50	6.96	7.43	7.91	8.38	8.86	9.34	9.82	10.31	10.79	11.28	11.77	12.26	12.75	13.24
<b>3</b>	3.16	3.35	3.61	3.91	4.24	4.61	5.00	5.41	5.83	6.26	6.71	7.16	7.62	8.08	8.54	9.01	9.49	9.96	10.44	10.92	11.40	11.88	12.37	12.85	13.34
<b>3.5</b>	3.64	3.81	4.03	4.30	4.61	4.95	5.32	5.70	6.10	6.52	6.95	7.38	7.83	8.28	8.73	9.19	9.66	10.12	10.59	11.07	11.54	12.02	12.50	12.98	13.46
<b>4</b>	4.12	4.27	4.47	4.72	5.00	5.32	5.66	6.02	6.40	6.80	7.21	7.63	8.06	8.50	8.94	9.39	9.85	10.31	10.77	11.24	11.70	12.18	12.65	13.12	13.60
<b>4.5</b>	4.61	4.74	4.92	5.15	5.41	5.70	6.02	6.36	6.73	7.11	7.50	7.91	8.32	8.75	9.18	9.62	10.06	10.51	10.97	11.42	11.88	12.35	12.82	13.29	13.76
<b>5</b>	5.10	5.22	5.39	5.59	5.83	6.10	6.40	6.73	7.07	7.43	7.81	8.20	8.60	9.01	9.43	9.86	10.30	10.74	11.18	11.63	12.08	12.54	13.00	13.46	13.93
<b>5.5</b>	5.59	5.70	5.85	6.04	6.26	6.52	6.80	7.11	7.43	7.78	8.14	8.51	8.90	9.30	9.71	10.12	10.55	10.98	11.41	11.85	12.30	12.75	13.20	13.66	14.12
<b>6</b>	6.08	6.18	6.32	6.50	6.71	6.95	7.21	7.50	7.81	8.14	8.49	8.85	9.22	9.60	10.00	10.40	10.82	11.24	11.66	12.09	12.53	12.97	13.42	13.87	14.32
<b>6.5</b>	6.58	6.67	6.80	6.96	7.16	7.38	7.63	7.91	8.20	8.51	8.85	9.19	9.55	9.92	10.31	10.70	11.10	11.51	11.93	12.35	12.78	13.21	13.65	14.09	14.53
<b>7</b>	7.07	7.16	7.28	7.43	7.62	7.83	8.06	8.32	8.60	8.90	9.22	9.55	9.90	10.26	10.63	11.01	11.40	11.80	12.21	12.62	13.04	13.46	13.89	14.33	14.76
<b>7.5</b>	7.57	7.65	7.76	7.91	8.08	8.28	8.50	8.75	9.01	9.30	9.60	9.92	10.26	10.61	10.97	11.34	11.72	12.10	12.50	12.90	13.31	13.73	14.15	14.58	15.01
<b>8</b>	8.06	8.14	8.25	8.38	8.54	8.73	8.94	9.18	9.43	9.71	10.00	10.31	10.63	10.97	11.31	11.67	12.04	12.42	12.81	13.20	13.60	14.01	14.42	14.84	15.26
<b>8.5</b>	8.56	8.63	8.73	8.86	9.01	9.19	9.39	9.62	9.86	10.12	10.40	10.70	11.01	11.34	11.67	12.02	12.38	12.75	13.12	13.51	13.90	14.30	14.71	15.12	15.53
<b>9</b>	9.06	9.12	9.22	9.34	9.49	9.66	9.85	10.06	10.30	10.55	10.82	11.10	11.40	11.72	12.04	12.38	12.73	13.09	13.45	13.83	14.21	14.60	15.00	15.40	15.81
<b>9.5</b>	9.55	9.62	9.71	9.82	9.96	10.12	10.31	10.51	10.74	10.98	11.24	11.51	11.80	12.10	12.42	12.75	13.09	13.44	13.79	14.16	14.53	14.92	15.31	15.70	16.10
<b>10</b>	10.05	10.11	10.20	10.31	10.44	10.59	10.77	10.97	11.18	11.41	11.66	11.93	12.21	12.50	12.81	13.12	13.45	13.79	14.14	14.50	14.87	15.24	15.62	16.01	16.40
<b>10.5</b>	10.55	10.61	10.69	10.79	10.92	11.07	11.24	11.42	11.63	11.85	12.09	12.35	12.62	12.90	13.20	13.51	13.83	14.16	14.50	14.85	15.21	15.57	15.95	16.32	16.71
<b>11</b>	11.05	11.10	11.18	11.28	11.40	11.54	11.70	11.88	12.08	12.30	12.53	12.78	13.04	13.31	13.60	13.90	14.21	14.53	14.87	15.21	15.56	15.91	16.28	16.65	17.03
<b>11.5</b>	11.54	11.60	11.67	11.77	11.88	12.02	12.18	12.35	12.54	12.75	12.97	13.21	13.46	13.73	14.01	14.30	14.60	14.92	15.24	15.57	15.91	16.26	16.62	16.99	17.36
<b>12</b>	12.04	12.09	12.17	12.26	12.37	12.50	12.65	12.82	13.00	13.20	13.42	13.65	13.89	14.15	14.42	14.71	15.00	15.31	15.62	15.95	16.28	16.62	16.97	17.33	17.69
<b>12.5</b>	12.54	12.59	12.66	12.75	12.85	12.98	13.12	13.29	13.46	13.66	13.87	14.09	14.33	14.58	14.84	15.12	15.40	15.70	16.01	16.32	16.65	16.99	17.33	17.68	18.03
<b>13</b>	13.04	13.09	13.15	13.24	13.34	13.46	13.60	13.76	13.93	14.12	14.32	14.53	14.76	15.01	15.26	15.53	15.81	16.10	16.40	16.71	17.03	17.36	17.69	18.03	18.38

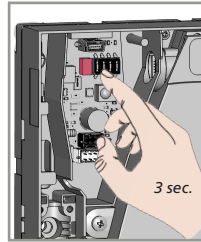
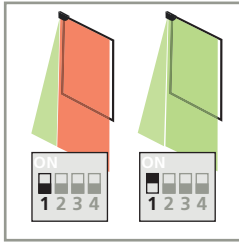
DOOR HEIGHT (feet)

*Any combination marked in red DOES NOT cover the full face of the door, and is, therefore, not recommended.*

Static Mode is the default teach-in for low-energy applications that do not use the secondary sensor. This teach-in learns the door width and height, and excludes environment surroundings (e.g. guide rails, trash cans, etc).

*In static mode, the sensor will not learn its surroundings (e.g. guiderails, trash cans, etc). Exercise caution in low-energy applications when programming the sensor stand-alone on the swing side of the door.*

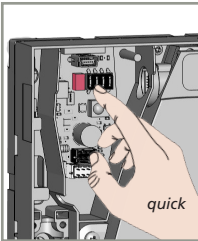
### 1: SET DIP SWITCH



Set DIP 1 to ON (up) for stall side, OFF (down) for reactivation side. After changing a DIP switch, the orange LED flashes.

Press the push button for 3 seconds to save the setting. The LED will blink green once to confirm the setting and then turn off.

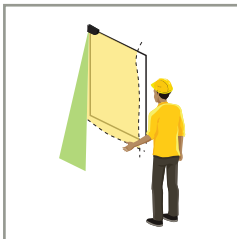
### 2: BEGIN TEACH-IN



Once the LED turns off, press the push button again to begin the teach-in. The LED will blink red/green indicating the learn is in progress.

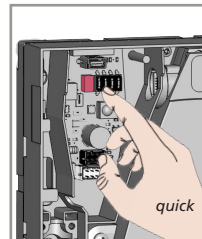
The LED will then turn green to indicate that it is time to begin the hand-gesture setup. Trace the leading edge of the door to learn the door width. The LED will blink red to indicate that the width is learned. NOTE: The sensor will automatically learn the height.

### 3: CUSTOM TRACING?



When the LED blinks green, you may custom-trace the detection field's height and/or leading edge. If customizing is not needed, simply wait out the 30-second, green blinking LED.

### 4: END TEACH-IN



If no custom shape is desired or the learn process is complete, press the push button to end the teach-in process.

# NOTES

---

---

---

---

---

---

---

---

---

---

---

---

---

---

---

---

---

---

---

---

---

---

---

## **BEA, INC. INSTALLATION/SERVICE COMPLIANCE EXPECTATIONS**

BEA, Inc., the sensor manufacturer, cannot be held responsible for incorrect installations or incorrect adjustments of the sensor/device; therefore, BEA, Inc. does not guarantee any use of the sensor/device outside of its intended purpose.

BEA, Inc. strongly recommends that installation and service technicians be AAADM-certified for pedestrian doors, IDA-certified for doors/gates, and factory-trained for the type of door/gate system.

Installers and service personnel are responsible for executing a risk assessment following each installation/service performed, ensuring that the sensor/device system performance is compliant with local, national, and international regulations, codes, and standards.

Once installation or service work is complete, a safety inspection of the door/gate shall be performed per the door/gate manufacturer's recommendations and/or per AAADM/ANSI/DASMA guidelines (where applicable) for best industry practices. Safety inspections must be performed during each service call – examples of these safety inspections can be found on an AAADM safety information label (e.g. ANSI/DASMA 102, ANSI/DASMA 107, UL294, UL325, and International Building Code).

Verify that all appropriate industry signage, warning labels, and placards are in place.



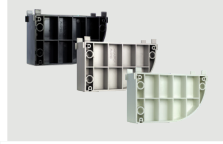
# ACCESSORIES AND REPLACEMENT PARTS

## ACCESSORIES



### 10LZRFLATSCANGDA

Accessory for glass doors



### 70.5751, 70.5752, 70.5753

Spacer  
70.5751 = white  
70.5752 = silver  
70.5753 = black



### 70.5745

Sentrex retrofit accessory

## REPLACEMENT PARTS



### 10LZRFLATSCAN-LB 10LZRFLATSCAN-LS 10LZRFLATSCAN-LW

Left sensor  
LB = black  
LW = white  
LS = silver



### 10LZRFLATSCAN-RB 10LZRFLATSCAN-RS 10LZRFLATSCAN-RW

Right sensor  
RB = black  
RW = white  
RS = silver



### 35.0213, 35.0220, 35.0242

Left cover  
35.0213 = black  
35.0220 = white  
35.0242 = silver



### 35.0214, 35.0221, 35.0243

Right cover  
35.0214 = black  
35.0221 = white  
35.0243 = silver



### 20.5433

Control Harness



### 35.1329

Primary/Secondary harness

Tech Support: 1-800-407-4545 | Customer Service: 1-800-523-2462  
General Tech Questions: techservices-us@BEAsensors.com | www.BEAsensors.com



A Halma company

75.5947.10 LZR-FLATSCAN SW 20240813