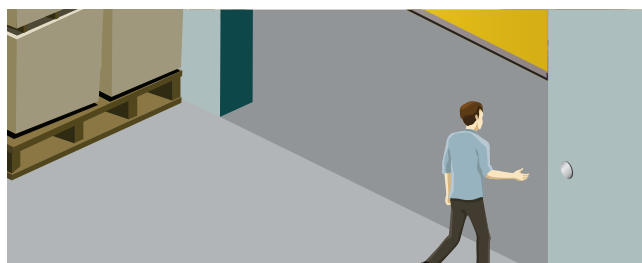
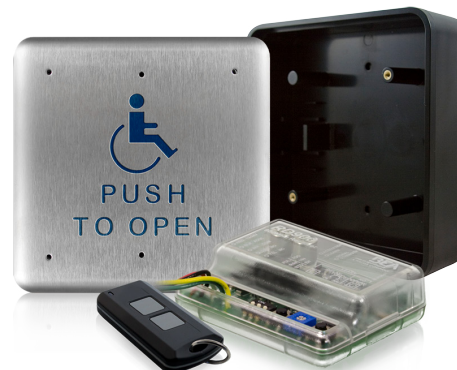


PUSH PLATE PACKAGES (SECURITY & ACCESS SPECIFIC)

Convenient packages built with BEA's most popular push plates

- Choose from these convenient one-box solutions that include our most popular mounting option, push plate artwork and wireless transmitters and receivers
- Packages available for vestibule and other common knowing act applications



PRODUCT SERIES

P/N	Description	P/N	Description
PUSH PLATE 455-433	(2) 10PBS451 - square push plates (2) 10BOX45SQSM - surface mount boxes (2) 10TD433PB9V - 9-volt 433 MHz transmitter (1) 10RD433 - 433 MHz receiver	PUSH PLATE 475S-HW	(2) 10PBS1 - square push plates (2) 10BOX475SQSM - surface mount boxes HARDWIRED SOLUTION ONLY
PUSH PLATE 455-900	(2) 10PBS451 - square push plates (2) 10BOX45SQSM - surface mount boxes (2) 10TD900PB - 900 MHz transmitter (1) 10RD900 - 900 MHz receiver	PUSH PLATE 6R-433	(2) 10PBR1 - round push plates (2) 10BOX6RNDMSM - surface mount boxes (2) 10TD433PB9V - 9-volt 433 MHz transmitter (1) 10RD433 - 433 MHz receiver
PUSH PLATE 455-BR2900	(2) 10PBS451 - square push plates (2) 10BOX45SQSM - surface mount boxes (2) 10TD900PB - 900 MHz transmitter (1) 10BR2-900 - 2-relay logic module	PUSH PLATE 6R-900	(2) 10PBR1 - round push plates (2) 10BOX6RNDMSM - surface mount boxes (2) 10TD900PB - 900 MHz transmitter (1) 10RD900 - 900 MHz receiver
PUSH PLATE 455-HW	(2) 10PBS451 - square push plates (2) 10BOX45SQSM - surface mount boxes HARDWIRED SOLUTION ONLY	PUSH PLATE 6R-BR2900	(2) 10PBR1 - round push plates (2) 10BOX6RNDMSM - surface mount boxes (2) 10TD900PB - 900 MHz transmitter (1) 10BR2-900 - 2-relay logic module
PUSH PLATE 475 EBA-900	(2) 10PBS1 - square push plates (2) 10BOX475SQSMEBA - surface mount boxes (2) 10TD900PB - 900 MHz transmitter (1) 10RD900 - 900 MHz receiver	PUSH PLATE JAMB-433	(2) 10PB1J - jamb style push plates (2) 10BOXJAMBMSM - surface mount boxes (2) 10TD433PB9V - 9-volt 433 MHz transmitter (1) 10RD433 - 433 MHz receiver
PUSH PLATE 475S-433	(2) 10PBS1 - square push plates (2) 10BOX475SQSM - surface mount boxes (2) 10TD433PB9V - 9-volt 433 MHz transmitter (1) 10RD433 - 433 MHz receiver	PUSH PLATE JAMB-900	(2) 10PB1J - jamb style push plates (2) 10BOXJAMBMSM - surface mount boxes (2) 10TD900PB - 900 MHz transmitter (1) 10RD900 - 900 MHz receiver
PUSH PLATE 475S-900	(2) 10PBS1 - square push plates (2) 10BOX475SQSM - surface mount boxes (2) 10TD900PB - 900 MHz transmitter (1) 10RD900 - 900 MHz receiver	VESTIBULE PACKAGE 433	(1) 10PBDGP1 - vestibule plate (1) 10BOX475SQSM - surface mounting box (2) PBS1 with matching mounting boxes (4) 10TD433PB9V - 9-volt 433 MHz transmitter (2) 10RD433 receivers
PUSH PLATE 475S-BR2900	(2) 10PBS1 - square push plates (2) 10BOX475SQSM - surface mount boxes (2) 10TD900PB - 900 MHz transmitter (1) 10BR2-900 - 2-relay logic module	VESTIBULE PACKAGE 900	(1) 10PBDGP1 - vestibule plate (1) 10BOX475SQSM - surface mounting box (2) PBS1 with matching mounting boxes (4) 10TD900PB - 900 MHz transmitters (2) 10RD900 receivers

Visit BEAsensors.com for a complete list of packages, accessories and replacement parts.
1.800.523.2462 | orders-us@BEAsensors.com