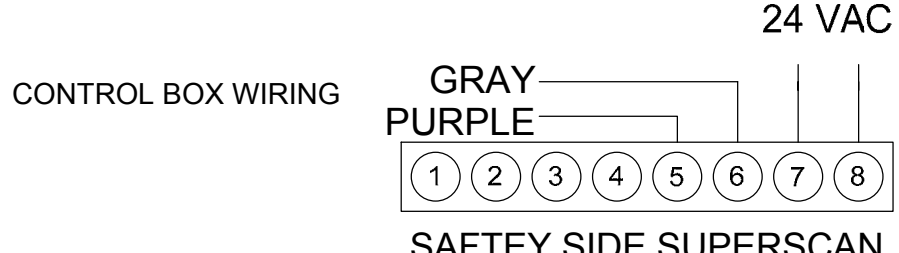
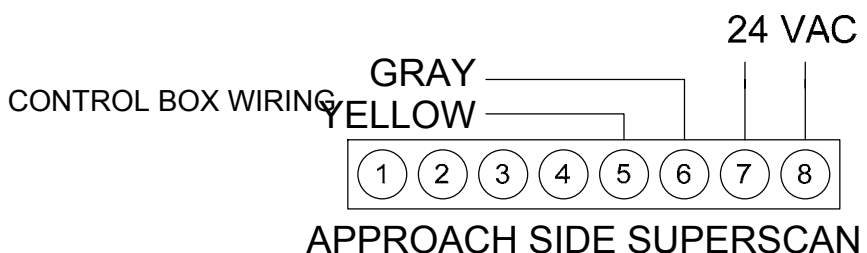


TRIM AND TAPE BLACK AND WHITE WIRES ON THIS CABLE ONLY



NOTES: 1) CONNECT DOR-O-MATIC CABLE TO DOR-O-MATIC INTERFACE CHIP INSIDE B.E.A. BODYGUARD AND 7-PIN CONNECTOR OF BODYGUARD
 2) SET CONTROL BOX FUNCTION TO '5' or '6'. 'E' FUNCTION PREFERRED IF AVAILABLE.

IF AFTER TROUBLESHOOTING A PROBLEM, A SATISFACTORY SOLUTION CANNOT BE ACHIEVED, PLEASE CALL B.E.A., INC. FOR FURTHER ASSISTANCE DURING EASTERN STANDARD TIME AT 1-800-523-2462 FROM 8AM - 5PM. FOR AFTER-HOURS, CALL EAST COAST: 1-866-836-1863 OR 1-800-407-4545 / MID-WEST: 1-888-308-8843 / WEST COAST: 1-888-419-2564. DO NOT LEAVE ANY PROBLEM UNRESOLVED. IF YOU MUST WAIT FOR THE FOLLOWING WORKDAY TO CALL B.E.A., LEAVE THE DOOR INOPERABLE UNTIL SATISFACTORY REPAIRS CAN BE MADE. NEVER SACRIFICE THE SAFE OPERATION OF THE AUTOMATIC DOOR OR GATE FOR AN INCOMPLETE SOLUTION. WEB: WWW.BEASENSORS.COM

BEA
 We open up New Horizons
 HALMA GROUP COMPANY
 100 ENTERPRISE DRIVE
 PITTSBURGH, PA 15275
 PHONE: (412) 249-4100
 FAX: (412) 249-4101
 EMAIL: www.beasensors.com

TITLE: DOR-O-MATIC INTERFACE CHIP/ CABLE WITH BODYGUARD, SUPERSCANS
Part Number: 77679-900 HARNESS

SIZE: A	DRAWN BY: KJG	REV BY: JDC	PART NO: 80.0076.03
	SCALE: NONE	DATE: 20 MARCH 2006	