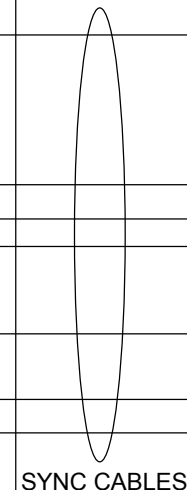
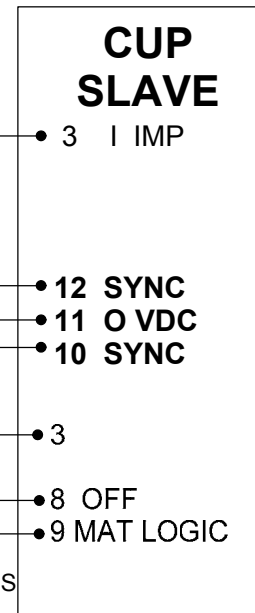
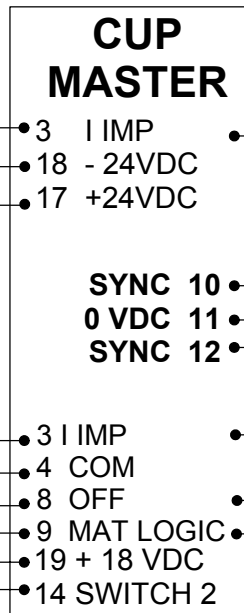
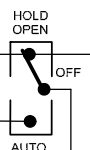
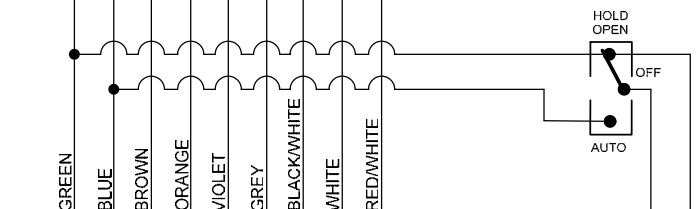
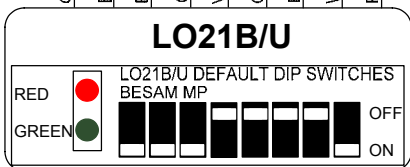
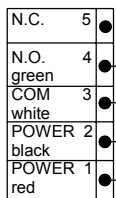
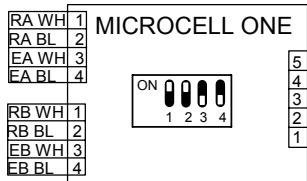


# BODYGUARD



\* RECEIVER (A), EMITTER (A)  
RECEIVER (B), EMITTER (B)  
WH= WHITE, BL= BLACK



- NOTES: 1) SET PMD FUNCTIONS F20 = a, F19=b, F18=00, F17=00, F16=05, F14=a, F13=a, F12 = 3 DEGREES LESS THAN F10.  
2) LO21B DIPSWITCH SETTINGS #1-5 LOCKOUT TIMING, #6 UP/ OFF, #7 UP/ OFF, #8 DOWN/ ON  
3) WHEN USING SAFETY BEAMS, USE MICROCELL 1. SBK-111 WILL NOT WORK.

IF AFTER TROUBLESHOOTING A PROBLEM, A SATISFACTORY SOLUTION CANNOT BE ACHIEVED, PLEASE CALL B.E.A., INC. FOR FURTHER ASSISTANCE DURING EASTERN STANDARD TIME AT 1-800-523-2462 FROM 8AM - 5PM. FOR AFTER-HOURS, CALL EAST COAST: 1-866-836-1863 OR 1-800-407-4545 / MID-WEST: 1-888-308-8843 / WEST COAST: 1-888-419-2564. DO NOT LEAVE ANY PROBLEM UNRESOLVED. IF YOU MUST WAIT FOR THE FOLLOWING WORKDAY TO CALL B.E.A., LEAVE THE DOOR INOPERABLE UNTIL SATISFACTORY REPAIRS CAN BE MADE. NEVER SACRIFICE THE SAFE OPERATION OF THE AUTOMATIC DOOR OR GATE FOR AN INCOMPLETE SOLUTION.WEB: WWW.BEASENSORS.COM



100 ENTERPRISE DRIVE  
PITTSBURGH, PA 15275  
PHONE: (412) 249-4100  
FAX: (412) 249-4101  
EMAIL: www.beasensors.com

**TITLE: BESAM MP CONTROL DUAL  
LO-21B/U WITH PASSPORT  
SYSTEM / BODYGUARD / DK-12**

SIZE: <b>A</b>	DRAWN BY: KJG	REV BY: TUC	PART NO: <b>80.0139.02</b>
	SCALE: NONE	DATE: 23 NOV 2005	SHEET 1 OF 1