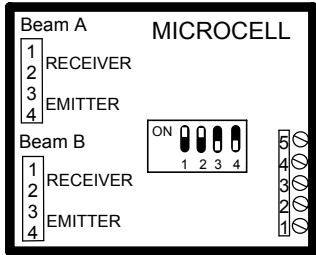


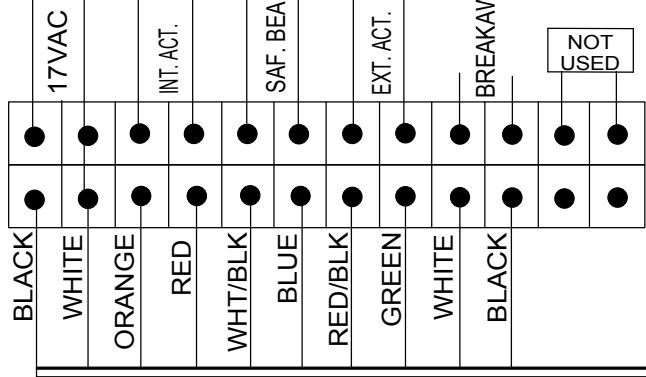
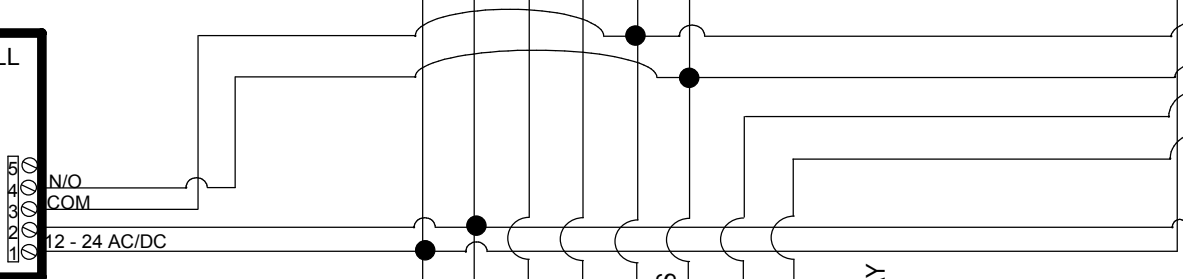


### INTERIOR WIZARD II

### EXTERIOR WIZARD II



Microcell Dip Switch Settings	
ON	OFF
#1 Double Beams	Single Beams
#2 N.O.	N.C.
#3 Range Over 15'	Range Under 15'
#4 Test	Default



10 or 12 pin Terminal Strip

TO J2 ON CONTROL BOX

# Preliminary

Wizard II Default Settings				
Rain Mode  2	Relay Hold Time  0	IR Curtain  3	Auto Learn  1	Setup  0
Sensitivity  7	Re-Direction  0	Radar Detection Mode  3	Immunity  3	Door Control Function  1

**BEA** We open up New Horizons  
HALMA GROUP COMPANY

**B.E.A., Inc.**  
 100 Enterprise Drive Pittsburgh, PA 15275  
 PH: (412) 249-4100 FAX: (412) 249-4101  
[www.beasensors.com](http://www.beasensors.com)

**TITLE:** Dromatic 96K With Wizard System w/Micro-Cells

SIZE: <b>A</b>	CAGE CODE:	DWG NO: 80.0216	FILE OF: Tech Support	DRAWN BY: JED	REV:
SCALE: NTS	DATE: 20 JAN 2004	SHEET: 1 OF 1			

