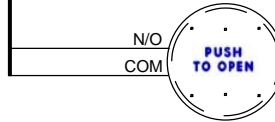


CUHub HOLD SWITCH HARNESS p/n: US02-0583-13

CONTROL OUTPUT HARNESS p/n: US02-0583-05

CU2 SYNC HARNESS p/n: US02-0583-03

SEE NOTE #1



SEE NOTE #2

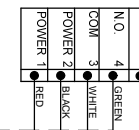
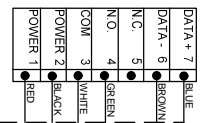
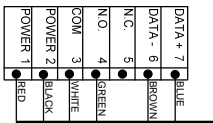
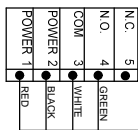
SEE NOTE #3

EAGLE 1

BODYGUARD 1

BODYGUARD 2

EAGLE 2



CUHub BODYGUARD HARNESS p/n: US02-0583-11

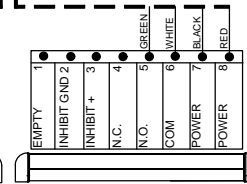
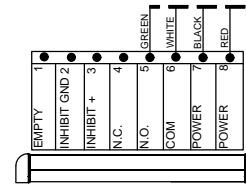
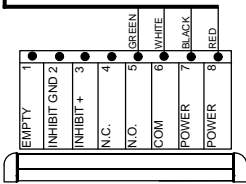
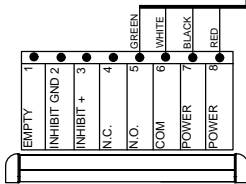
CUHub EAGLE HARNESS p/n: US02-0583-08

CUHub BODYGUARD DUAL-EGRESS HARNESS p/n: US02-0583-09

CUHub SUPERSCAN HARNESS p/n: US02-0583-10

SEE NOTE #3

CUHub SUPERSCAN HARNESS p/n: US02-0583-10



- NOTES:
1. THE KNOWING ACT SWITCH IS CONNECTED AT THE AUX INPUT AND CAN BE ANY DRY CONTACT DEVICE SUCH AS A PUSHPLATE, CARD READER, ETC. THE AUX INPUT IS REQUIRED FOR ALL INITIAL ACTIVATION WHEN FUNCTION 'FA' ON THE CUHub IS SET TO '01'.
  2. THE SECOND BODYGUARD AND EAGLE ARE PRIMARILY USED IN DUAL-EGRESS APPLICATIONS. IF A SECOND BODYGUARD IS REQUIRED, USE A "Y" HARNESS (US02-0583-09).
  3. SECOND CU2 CONTROL AND SECOND SET OF DOOR MOUNTED SENSORS ONLY NEEDED FOR DOUBLE DOOR APPLICATIONS.
- IF AFTER TROUBLESHOOTING A PROBLEM, A SATISFACTORY SOLUTION CANNOT BE ACHIEVED, PLEASE CALL BESAM AT 1-800-97BESAM (1-800-972-3726) OR USTECHSERVICES@BESAM-USA.COM. DO NOT LEAVE ANY PROBLEM UNRESOLVED. IF YOU MUST WAIT FOR THE FOLLOWING WORKDAY TO CONTACT BESAM, LEAVE THE DOOR INOPERABLE UNTIL SATISFACTORY REPAIRS CAN BE MADE. NEVER SACRIFICE THE SAFE OPERATION OF THE AUTOMATIC DOOR OR GATE FOR AN INCOMPLETE SOLUTION. WEB: WWW.BESAM.COM

|                |                               |   |                 |
|----------------|-------------------------------|---|-----------------|
|                |                               | 100 ENTERPRISE DRIVE<br>PITTSBURGH, PA 15275<br>PHONE: (412) 249-4100<br>FAX: (412) 249-4101<br>EMAIL: www.bessensors.com |                 |
|                |                               | <b>TITLE: GENERAL CUHub SYSTEM</b>  |                 |
| SIZE: TUC<br>B | REV BY: TUC<br>DATE: 02/14/08 | PART NO:<br><b>80.0275.01</b>   | SHEET<br>1 OF 1 |