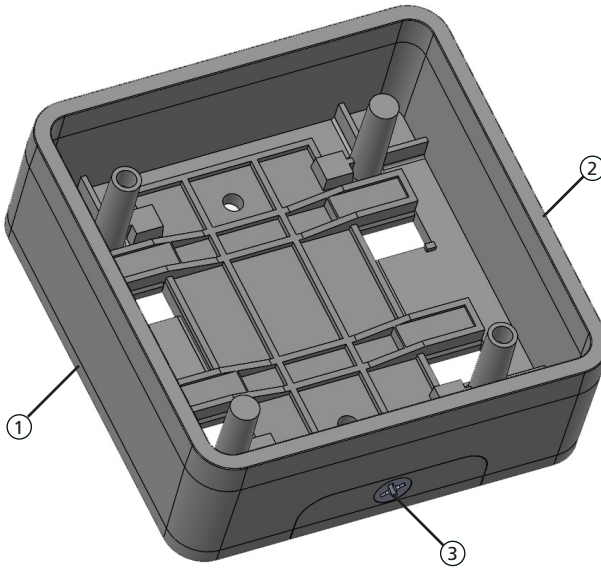


MOUNTING BOX EBA

4.75" Square Surface Mount Box with Easy Battery Access

(US version)

DESCRIPTION



1. Mounting Plate
2. Box
3. Locking Screw (Phillips)

COMPATIBLE PRODUCTS

The following 4.75" square push plates and accessories are compatible with the Mounting Box EBA:

- PBS - PUSH TO OPEN text only
- PBS1 - PUSH TO OPEN text and accessibility logo
- PBSLL - accessibility logo only
- PBS10 - blank
- PBSE - PUSH TO EXIT text only
- PBS1B - PUSH TO OPEN text and accessibility logo, blue
- PBS1SB - PUSH TO OPEN text and accessibility logo, satin brass
- PBS1BB - PUSH TO OPEN text and accessibility logo, bright brass
- PBRACKET - surface mount kit
- PBRACKETCA - surface mount kit, clear anodized
- WRSQ475 - weather ring

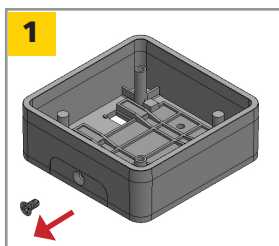
PRECAUTIONS



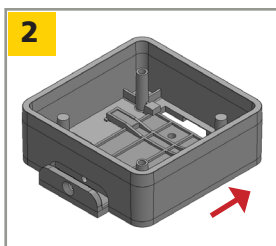
CAUTION

- ❑ Shut off all power going to header before attempting any wiring procedures.
- ❑ Maintain a clean & safe environment when working in public areas.
- ❑ Constantly be aware of pedestrian traffic around the door area.
- ❑ Always stop pedestrian traffic through the doorway when performing tests that may result in unexpected reactions by the door.
- ❑ ESD (electrostatic discharge): Circuit boards are vulnerable to damage by electrostatic discharge. Before handling any board ensure you dissipate your body's ESD charge.
- ❑ Always check placement of all wiring before powering up to ensure that moving door parts will not catch any wires and cause damage to equipment.
- ❑ Ensure compliance with all applicable safety standards (i.e. ANSI A156.10) upon completion of installation.
- ❑ DO NOT attempt any internal repair of the components. All repairs and/or component replacements must be performed by BEA, Inc. Unauthorized disassembly or repair:
 1. May jeopardize personal safety and may expose one to the risk of electrical shock.
 2. May adversely affect the safe and reliable performance of the product resulting in a voided warranty.

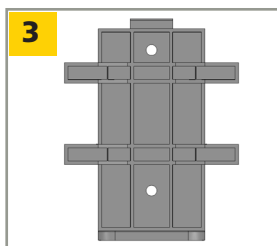
INSTALLATION



Remove locking screw.



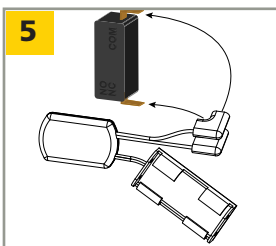
Slide box off of mounting plate.



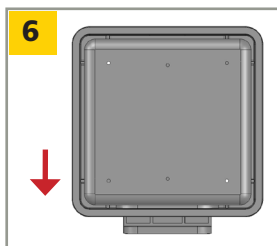
Mount mounting plate to wall or other flat surface.



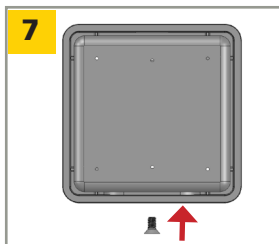
Install push plate to box.



Connect wireless transmitter to push plate NO and COM.

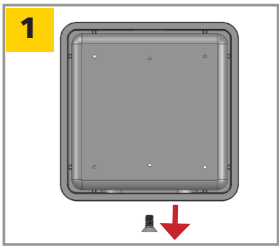


Slide box onto mounting plate.

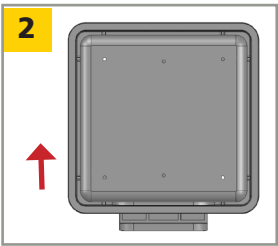


Reinstall locking screw.

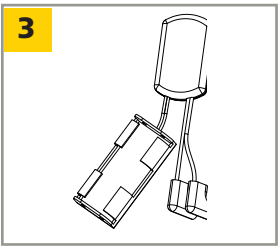
BATTERY REPLACEMENT



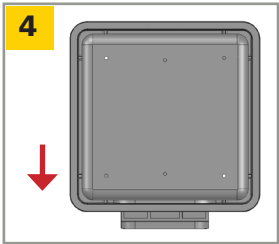
Remove locking screw.



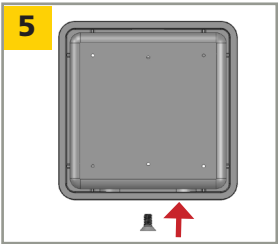
Slide box off of mounting plate.



Replace wireless transmitter ¹ batteries.



Slide box onto mounting plate.



Reinstall locking screw.

NOTES:

1. Compatible with any BEA wireless transmitter. Refer to transmitter specific user's guide for battery information.



- The device should not be used for purposes other than its intended use. All other uses cannot be guaranteed by the manufacturer of the sensor.
- The installer of the door system is responsible for carrying out a risk assessment and installing the sensor and the door system in compliance with applicable national and international regulations and standards on door safety.
- The manufacturer of the sensor cannot be held responsible for incorrect installations or inappropriate adjustments of the sensor.

TECHNICAL SPECIFICATIONS

Dimensions:	5.41" (L) x 5.41" (W) x 1.97" (T)
Material:	Box - ABS Plastic Locking Screw - Stainless Steel

Specifications are subject to change without prior notice.
All values measured in specific conditions.

PLEASE KEEP FOR FURTHER USE - DESIGNED FOR COLOR PRINTING

©BEA | Original Instructions | 75-5899.01 MOUNTING BOX EBA 20161214

A HALMA COMPANY

ANSI / AAADM Compliance



Upon completion of the installation or service work, at a minimum, perform a daily safety check in accordance with the minimum inspection guidelines provided by AAADM. Provide each equipment owner with an owner's manual that includes a daily safety checklist and contains, at a minimum, the information recommended by AAADM. Offer an information session with the equipment owner explaining how to perform daily inspections and point out the location of power/operation switches to disable the equipment if a compliance issue is noted. The equipment should be inspected annually in accordance with the minimum inspection guidelines. A safety check that includes, at a minimum, the items listed on the safety information label must be performed during each service call. If you are not an AAADM certified inspector, BEA strongly recommends you have an AAADM certified inspector perform an AAADM inspection and place a valid inspection sticker below the safety information label prior to putting the equipment into operation.

