

APPLICATION NOTE

APP NOTE

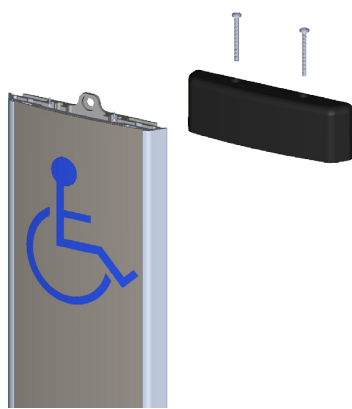
BEA Products to which this Application Note applies: 10LPR36-HW

PURPOSE: In-field conversion of a hardwired LPR-36 (10LPR36-HW) into a wireless version.

ATTENTION: Please take extra care to make sure that butt connectors, in Step 6 below, are oriented in the center channel of the LPR in a manner that does not interfere with the travel of the plate. Also, be sure that any excess wire is inserted into top end cap.



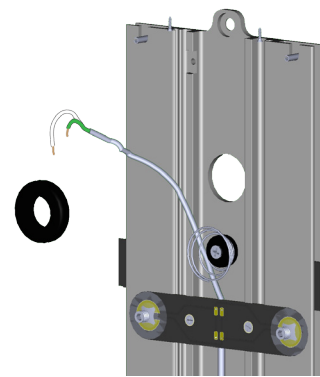
1. Remove top end cap screw covers (do not discard)



2. Remove top end cap (discard)



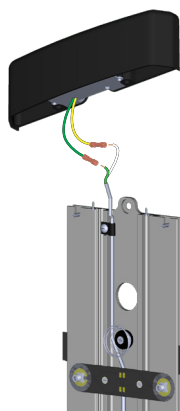
3. Completely remove faceplate



4. Remove grommet from base (discard)



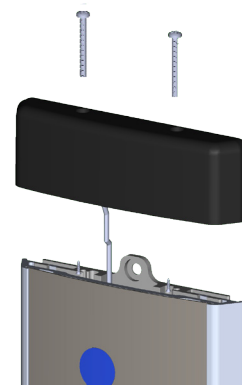
5. Add wire stay (included), with wire passed through



6. Insert wires into butt connectors leading from new top end cap (included) and crimp



7. Replace faceplate



8. Fasten new top end cap and replace top end cap screw covers (from step 1)