



UL LISTED MAGLOCKS

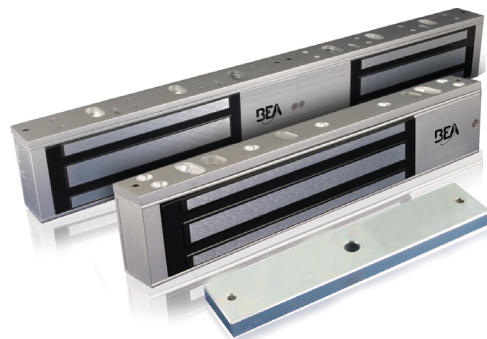
MAGLOCKS WITH ADJUSTABLE RELOCK TIME DELAY & LOCK STATUS SENSOR

PRODUCT



[Go to the product page](#)

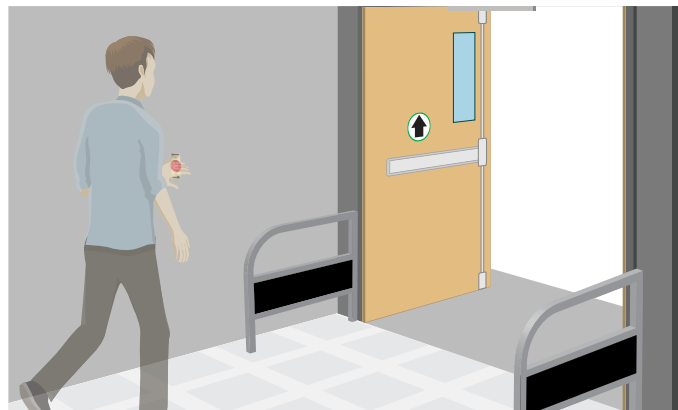
CERTIFICATIONS



DESCRIPTION

BEA's **UL LISTED MAGLOCKS** provide a standards compliant locking solution for retail, healthcare, banking and other high security facilities that require UL Listed security products. maglocks can be used on hollow metal, wood, aluminum, glass and composite door materials.

The **UL LISTED MAGLOCKS** are available in surface mount single or double door configurations, with holding force of 600 or 1,200 lbs. These locks include adjustable zero to 90 second relock time delay and a lock status sensor with visible LED.



Customizable

Adjustable zero to 90 second relock time delay

Enhanced Reliability

Lock status sensor with visible LED offers either normally open (NO) or normally closed (NC) output configurations

UL Listed

Input voltage of 12 / 24 VDC, must be used with UL Listed power supply

Mounting Accessories

Variety of mounting hardware available

Convenient Packages Available

Available in access control packages with request-to-exit sensor, logic module, actuator, power supply and maglock

TECHNICAL SPECIFICATIONS

10MAGLOCK3UL

Door Configuration	Single, surface mount
Holding Force	600 lb
Input Voltage	12 / 24 VDC (UL Listed power supply required)
Power Consumption	505 mA @ 12 VDC 260 mA @ 24 VDC
Dimensions	9.84" (W) × 1.65" (H) × 1.02" (D)
Material	Anodized Aluminum housing
Relock Time Delay	0 – 90 s
Sensor	Lock Status Sensor (NO or NC outputs)
Output Relay	Up to 1 A @ 24 VDC

10MAGLOCK6UL

Door Configuration	Double, surface mount
Holding Force	600 lb
Input Voltage	12 / 24 VDC (UL Listed power supply required)
Power Consumption	505*2 mA @ 12 VDC 260*2 mA @ 24 VDC
Dimensions	19.76" (W) × 1.65" (H) × 1.02" (D)
Material	Anodized Aluminum housing
Relock Time Delay	0 - 90 s
Sensor	Lock Status Sensor (NO or NC outputs)
Output Relay	Up to 1 A @ 24 VDC

10MAGLOCK1UL

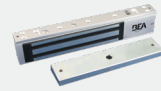
Door Configuration	Single, surface mount
Holding Force	1200 lb
Input Voltage	12 / 24 VDC (UL Listed power supply required)
Power Consumption	505 mA @ 12 VDC 260 mA @ 24 VDC
Dimensions	10.47" (W) × 2.87" (H) × 1.58" (D)
Material	Anodized Aluminum housing
Relock Time Delay	0 - 90 s
Sensor	Lock Status Sensor (NO or NC outputs)
Output Relay	Up to 1 A @ 24 VDC

10MAGLOCK5UL

Door Configuration	Double, surface mount
Holding Force	1200 lb
Input Voltage	12 / 24 VDC (UL Listed power supply required)
Power Consumption	505*2 mA @ 12 VDC 260*2 mA @ 24 VDC
Dimensions	20.94" (W) × 2.87" (H) × 1.58" (D)
Material	Anodized Aluminum housing
Relock Time Delay	0 – 90 s
Sensor	Lock Status Sensor (NO or NC outputs)
Output Relay	Up to 1 A @ 24 VDC

*This product must be powered from a UL Listed, regulated, power-limited, power supply

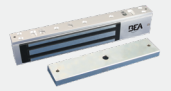
PRODUCT SERIES



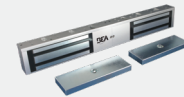
10MAGLOCK3UL
600 lb / Single



10MAGLOCK6UL
600 lb / Double



10MAGLOCK1UL
1,200 lb / Single



10MAGLOCK5UL
1200 lb / Double



10LZBRMAG3UL
L & Z Bracket for
600 lb / Single



10LZBRMAG1UL
L & Z Bracket for
1,200 lb / Single



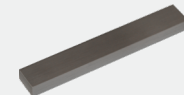
10MAG6LZUL
(2) L & Z Bracket for
600 lb / Double



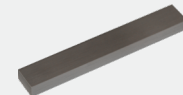
10MAG5LZUL
(2) L & Z Bracket for
1,200 lb / Double



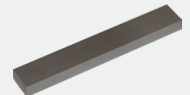
10UBRACKETUL
Glass door
mounting kit



10FILLER12UL
1/2" × 3/4" Filler Plate



10FILLER34UL
3/4" × 3/4" Filler Plate



10FILLER58UL
1/16" × 3/4" Filler Plate



10RIMHOUSING3UL
Armature plate housing
for single 600 lb



10RIMHOUSING1UL
Armature plate housing
for single 1,200 lb



10SPACER3UL
Vertical spacer bracket
for single 600 lb



10SPACER1UL
Vertical spacer bracket
for single 1,200 lb



10PS12-24
UL / ULC Listed power
supply



10PS12-24D
UL / ULC Listed power supply,
backup circuit
(battery not included)

DISCLAIMER Information is supplied upon the condition that the persons receiving it will make their own determination as to its suitability for their purposes prior to use. In no event will BEA be responsible for damages of any nature whatsoever resulting from the use of or reliance upon information from this document or the products to which the information refers. BEA has the right without liability to change descriptions and specifications at any time.

WWW.BEASENSORS.COM



BEA AMERICAS / RIDC Park West / 100 Enterprise Drive / Pittsburgh, PA
T 1-800-523-2462 / F 1-888-523-2462 / E info-us@BEAsensors.com

A Halma company