



UL LISTED GATELOCKS

WEATHER RESISTANT, ELECTROMAGNETIC LOCK

PRODUCT



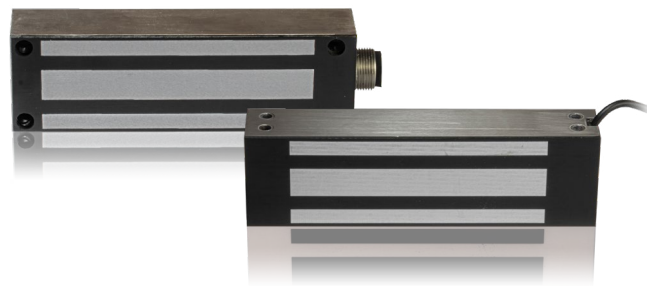
[Go to the product page](#)

CERTIFICATIONS

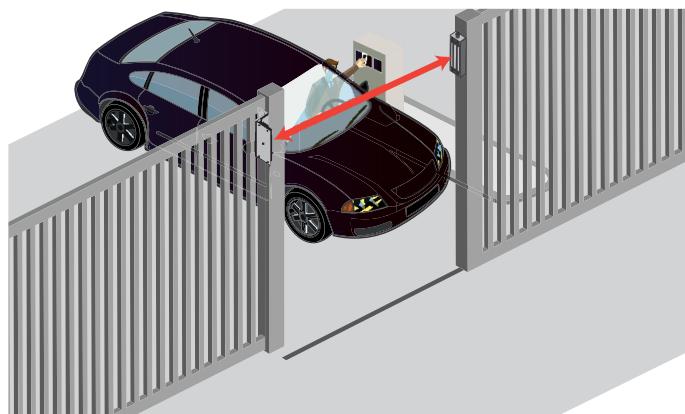


DESCRIPTION

BEA's **UL LISTED GATELOCKS** are designed to withstand the elements, featuring a stainless steel exterior and IP65 enclosure to protect internal electronics. It's weather-resistant construction makes it ideal for industrial gate and exterior door applications.



With a holding force of 1,200 lbs, the **UL LISTED GATELOCK** is available in both a front mount model for sliding gates and a side mount model for swinging doors / gates. These locks include a built-in lock status sensor with an output relay.



Multiple Mounting Options

Available in front or side mount with a 1200 lb holding force

Easy-To-Mount

Front mount model comes with a ¾ inch male NPS threaded conduit fitting

Lock Status Sensor

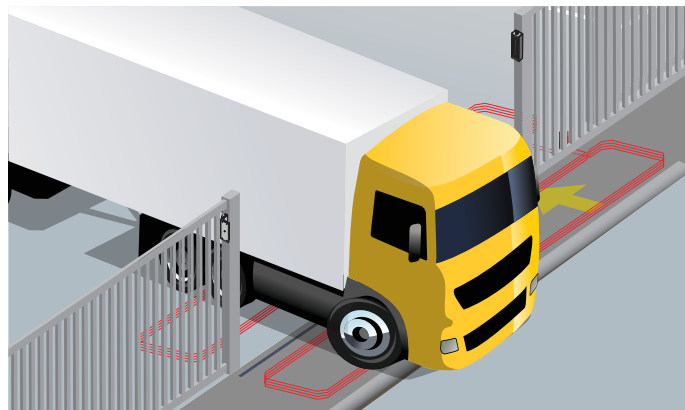
Built-in remote lock status sensor with an output relay

Additional Protection

Built-in surge protection

Withstands The Elements

Weather-resistant, stainless steel housing makes these locks suitable for outdoor applications



TECHNICAL SPECIFICATIONS

10GL1200R

Door Configuration	Sliding gate, front mount
Holding Force	1200 lb
Input Voltage	12 / 24 VDC (UL Listed power supply recommended)
Current Draw	500 mA @ 12 VDC 250 mA @ 24 VDC
Relay Switch	250 mA @ 12 VDC 125 mA @ 24 VDC
Dimensions	8 ¾" (W) x 2 ½" (H) x 1 ⅝"
Material	Stainless steel
Sensor	Lock status sensor with relay output
Cable Specifications	24 AWG 7-conductor cable, 3 ½'
Norm Conformity	UL and CUL ANSI 156.10 NEMA 4 / IP65
Conduit Fitting (10GL1200R ONLY)	¾" NPS conduit fitting 14 threads per inch

10GL1200SR

Door Configuration	Sliding door / gate, side mount
Holding Force	1200 lb
Input Voltage	12 / 24 VDC (UL Listed power supply recommended)
Current Draw	500 mA @ 12 VDC 250 mA @ 24 VDC
Relay Switch	250 mA @ 12 VDC 125 mA @ 24 VDC
Dimensions	8 ¾" (W) x 2 ½" (H) x 1 ⅝" (D)
Material	Stainless steel
Sensor	Lock status sensor with relay output
Cable Specifications	24 AWG 7-conductor cable, 3 ½'
Norm Conformity	UL and CUL ANSI 156.10 NEMA 4 / IP65

PRODUCT SERIES



10GL1200R
1200 lb / Front mount
for sliding gate



10GL1200SR
1200 lb / Side mount for
swinging door / gate



10LZRBGATE1200
L & Z Mounting
bracket



10PS12-24
UL / ULC Listed power
supply



10PS12-24D
UL / ULC Listed power supply,
backup circuit
(battery not included)

DISCLAIMER Information is supplied upon the condition that the persons receiving it will make their own determination as to its suitability for their purposes prior to use. In no event will BEA be responsible for damages of any nature whatsoever resulting from the use of or reliance upon information from this document or the products to which the information refers. BEA has the right without liability to change descriptions and specifications at any time.

WWW.BEASENSORS.COM



BEA AMERICAS / RIDC Park West / 100 Enterprise Drive / Pittsburgh, PA
T 1-800-523-2462 / F 1-888-523-2462 / E info-us@BEAsensors.com

A **Halma** company