



APPLICATION NOTE

LZR®-FLATSCAN SW STATIC MODE

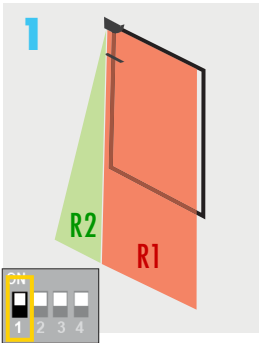
This Application Note applies to the following BEA Products: LZR®-FLATSCAN SW

This procedure is intended for applications in which the location is stationary (e.g. window, security).

1. Change the DIP switch for the required field configuration.
2. Validate the new DIP switch setting.
3. Launch a Learn.

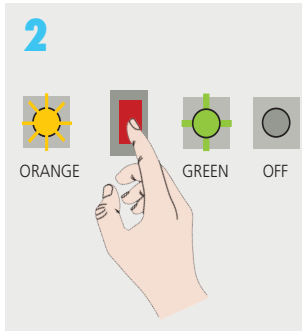
RELAY 1

CONFIGURATION



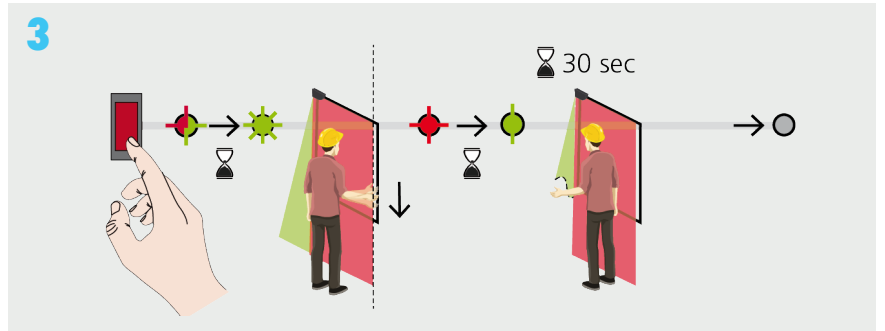
Set the DIP switch to ON.

DIP SWITCH SETTING



After changing a DIP switch, the orange LED flashes. A long push on the push-button confirms the settings.

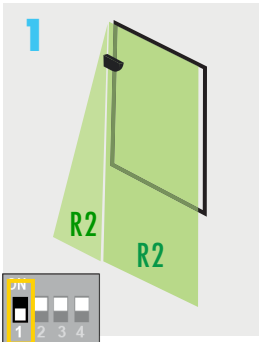
LEARN PROCESS



A custom shape can be traced in the pinch zone during the 30-second Learn process. To end this process sooner, push the button again.

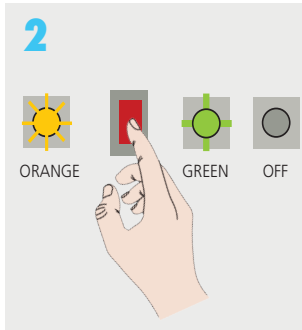
RELAY 2

CONFIGURATION



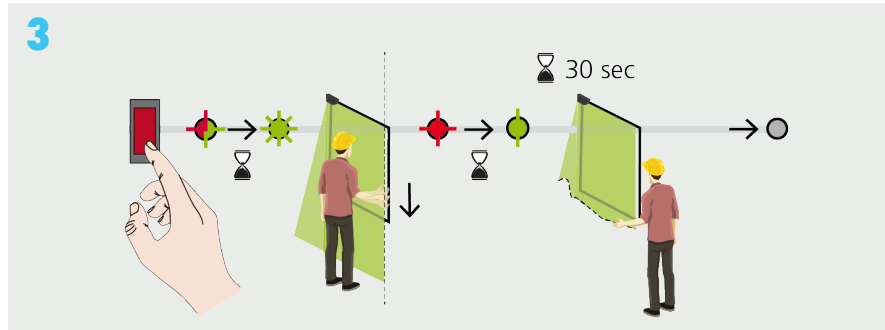
Set the DIP switch to OFF.

DIP SWITCH SETTING



After changing a DIP switch, the orange LED flashes. A long push on the push-button confirms the settings.

LEARN PROCESS



A custom shape can be traced in the whole detection area during the 30-second Learn process. To end this process sooner, push the button again.

See User's Guide to adjust the sensor.