

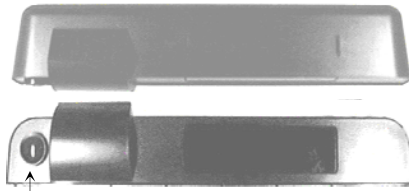
USERS GUIDE WIZARD PLUS TRI-FUNCTIONAL SENSOR

PRODUCT DESCRIPTION

The Wizard+ provides 3 functions in one package: Motion sensing, presence sensing, and imaging. The imaging function is an isolated function, and is not used for motion or presence detection. The camera provides an analog output for direct input to monitors, VCR's, etc.

Part Number	Image	Format
10WIZARD+1	Black & White	NTSC (USA)
10WIZARD+1C	Color	NTSC (USA)
10WIZARD+2	Black & White	PAL (EUROPE)
10WIZARD+2C	Color	PAL (EUROPE)

COMPONENT ID



Camera



Extension Harness
With Female RCA Connector
60" Length

SAFETY PRECAUTIONS



- Shut off all power going to the header before attempting any wiring procedures.
- Maintain a clean & safe environment when working in public areas.
- Constantly be aware of pedestrian traffic around the door area.
- Always stop pedestrian traffic through the doorway when performing tests that may result in unexpected reactions by the door.
- Always check placement of all wiring before powering up to insure that moving door parts will not catch any wires and cause damage to equipment.
- Ensure compliance with all applicable safety standards (i.e. ANSI A156.10) upon completion of installation.

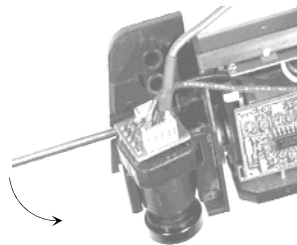
INSTALLATION

1. Remove the cover from the Wizard Plus. Take care when removing the cover, as it needs to be "rolled" off of the base plate from the top down.

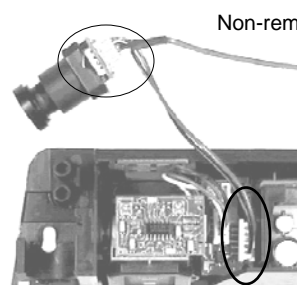
Rotate the cover off from the sensor so the cover may clear the camera lens.
When re-installing cover, simply reverse the procedure.



2. Remove the camera from the base plate as shown. Simply place a small screwdriver under the black housing of the camera, and gently pry the camera from its mount plate. Once removed, unplug the 5-pin connector from the sensor.



Gently pry camera
away from bracket



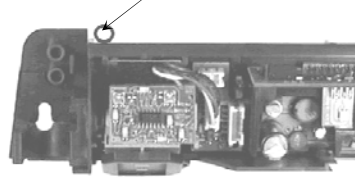
Non-removable connector at camera

5-pin connector with
red and black wire

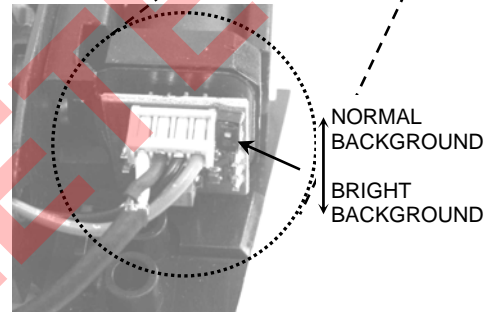
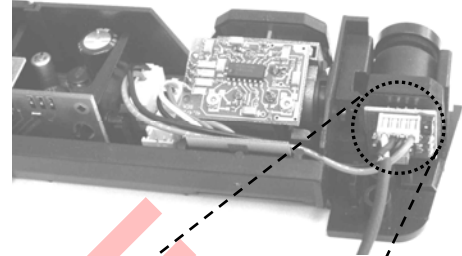
INSTALLATION

3. Install the Sensor as outlined in the Wizard's Users Guide (PN: 75.0127). Once the Wizard Plus sensor is in place, do not tighten the mounting screws
4. Mark a location on the header for a wire passage hole that is just above the sensor as shown below and route the cable through the hole. Ensure that the hole is in a location that will be covered by the sensor cover when installed.

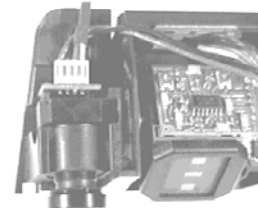
3/8" hole for camera extension cable



5. Re-Install the sensor to the mounting surface and tighten the mounting screws as outlined in the Wizard User's Guide.
6. On Black and White camera systems (10WIZARD+1 and 10WIZARD+2), there is a day-night switch to optimize the picture for extremely bright surroundings. This may be used in exterior door applications, for example, when there is a large amount of sunlight or other bright light source in the area. The switch is located on the circuit board on the back of the camera. The switch is to be turned on (down position) for this situation. The switch is shipped in the off position. See the following pictures:

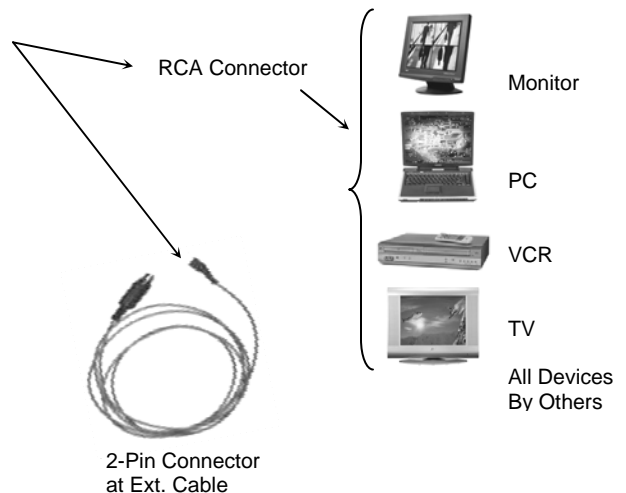
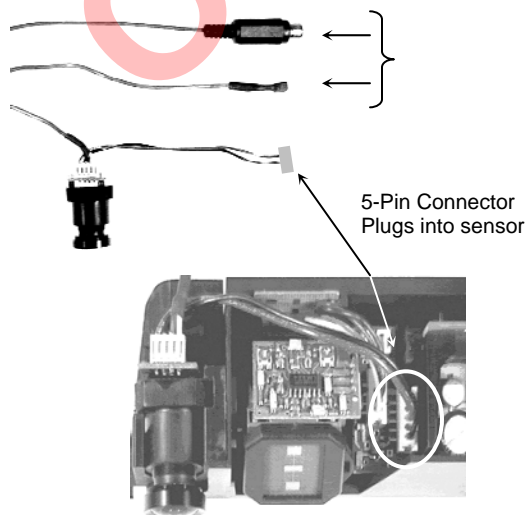


7. Re-install the camera into its mount bracket on the sensor. The barrel portion of the camera is a simple press-fit. When installed properly, it should be positioned as shown here.



CABLING

1. Attach all sensor wiring as outlined in the Wizard User's Guide. In addition, attach the camera cables as shown.



2. There are no separate power requirements for the camera, as it is powered by the internal power supply of the sensor.

COMPANY
CONTACT

If after troubleshooting a problem, a satisfactory solution cannot be achieved, please call B.E.A., Inc. for further assistance during **Eastern Standard Time at 1-800-523-2462 from 8am - 5pm.** For after-hours, call East Coast: 1-866-836-1863 or 1-800-407-4545 / Mid-West: 1-888-308-8843 / West Coast: 1-888-419-2564. **DO NOT leave any problem unresolved.** If you must wait for the following workday to call B.E.A., leave the door inoperable until satisfactory repairs can be made. **NEVER sacrifice the safe operation of the automatic door or gate for an incomplete solution.**
Web: www.beainc.com

OBSOLETE