



# FOCUS FAMILY

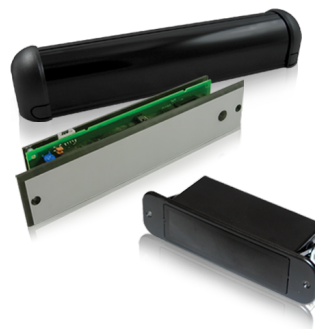
FOCUSED ACTIVE INFRARED  
PRESENCE SENSORS

## VIDEO



[Watch the product video](#)

## TECHNOLOGY



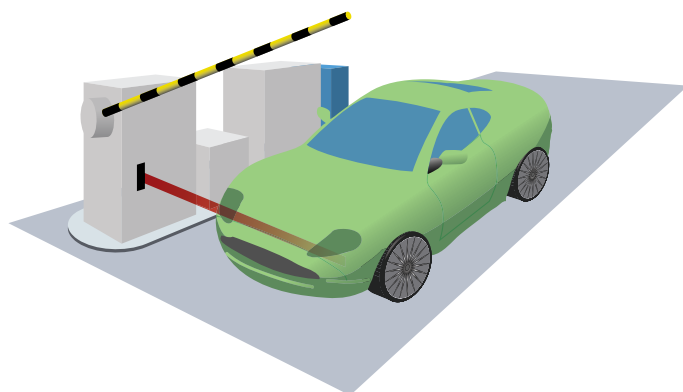
## DESCRIPTION

BEA's **FOCUS FAMILY** consists of focused active infrared-based presence sensors designed to effectively detect people and objects. These compact sensors can be used in a variety of applications where space may be limited or additional detection is required to complement pre-installed sensors, such as on revolving doors where pinch-zone protection is needed.

The **FOCUS 2** offers the same protection as the **FOCUS** but can be recess mounted.

The **SMART FOCUS** provides internal and external self-monitoring. Single button setup ensures easy installation in most common applications.

The **FOCUS FAMILY** can be used on revolving doors, drive-thru windows, and in industrial applications such as gate and access control.

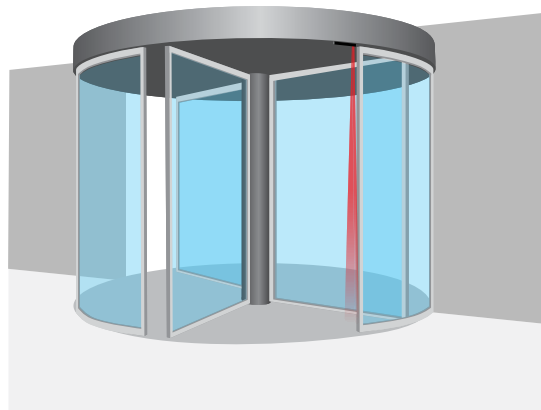


## Low Profile Detection

Low profile, recessed-mount enables FOCUS 2 and SMART FOCUS to protect pedestrians from contact with the moving door

## Monitoring Capable

SMART FOCUS is fully monitored (not the FOCUS or FOCUS 2)



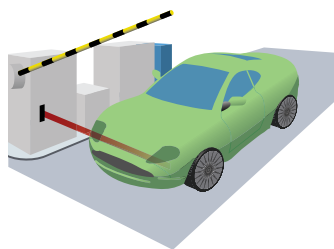
## Perfect For Activation Of Small Windows / Pass-Thru

Ideal for drive-thru / pass-thru applications

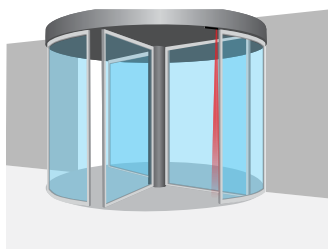
## Ideal For Gate And Barriers

Horizontal mount for use in gate and barrier applications

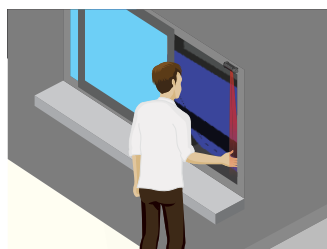
## APPLICATIONS



Gates & Barriers



Revolving Doors



Drive-Thru / Pass-Thru

## TECHNICAL SPECIFICATIONS

### 10FOCUS & 10FOCUS2

<b>Technology</b>	Focused Active Infrared
<b>Detection Mode</b>	Presence
<b>Power Supply</b>	24 VAC / VDC $\pm 10\%$
<b>Current Consumption</b>	60 mA (On); 30 mA (Off)
<b>Output Interface; Relay</b>	Relay; max. contact rating is 1 A @ 30 V (resistive)
<b>Detection Range</b>	0 – 8 1/5'
<b>Distance Adjustment</b>	2 – 8', rotating cam with linear adjustment
<b>Detection Time</b>	< 50ms
<b>Detection Signal Duration</b>	Infinite Presence Detection
<b>LED Indicator</b>	
Green	No Detection
<b>Operating Temperature Range</b>	-30 – 140 °F
<b>Connection to controller</b>	5-conductor cable
<b>Relay Output</b>	NO or NC

### 10SMARTFOCUS

<b>Technology</b>	Focused Active Infrared
<b>Detection Mode</b>	Presence detection by distance measurement
<b>Detection Field</b>	1 19/50" x 2 19/25" @ 7 1/4' mounting height
<b>Light Indicator</b>	
Red	ON during detection
Orange	Flashes 1x after power on
<b>Response Time</b>	64 ms
<b>Mounting Height</b>	2 – 10'
<b>Supply Voltage</b>	12 – 24 VAC / VDC -5% / 10%
<b>Mains Frequency</b>	50 – 60 Hz
<b>Max. Current Consumption</b>	120 mA @ 24 VAC / 80 mA @ 24 VDC
<b>Standard Output</b>	Relay (free of potential contact)
Max. Contact Voltage	42 VAC / VDC
Max. Contact Current	1 A (resistive)
Max. Switching Power	30 W (DC) / 60 VA (AC)
<b>Monitoring Input</b>	1 optocoupler (free of potential contact)
Max. Contact Voltage	30 V
Voltage Threshold	High state: > 10 V Low State: < 1 V
<b>Hold Time</b>	0.5 s
<b>Reflectivity</b>	min. 10% at IR-wavelength of 850 nm
<b>Temperature Range</b>	-13 – 131 °F (-25 – 55 °C); 0 – 95% rel. humidity, non-condensing
<b>Degree of Protection</b>	IP53
<b>Dimensions</b>	5 3/4" (L) x 1 3/5" (H) x 2" (D)
<b>Length of Main Cable</b>	8'
<b>Norm Conformity</b>	EN 61000-6-2; EN 61000-6-3; ISO 13849-1 Performance Level «c» CAT. 2 (under the condition that the door control system monitors the sensor at least once per door cycle)

**DISCLAIMER** Information is supplied upon the condition that the persons receiving it will make their own determination as to its suitability for their purposes prior to use. In no event will BEA be responsible for damages of any nature whatsoever resulting from the use of or reliance upon information from this document or the products to which the information refers. BEA has the right without liability to change descriptions and specifications at any time.

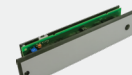
## PRODUCT SERIES



**10FOCUS**  
Surface mount, Presence sensor



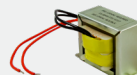
**10SMARTFOCUS**  
Recessed, Presence sensor



**10FOCUS2**  
Recessed, Presence sensor



**10SMARTFOCUS SMA**  
Smart focus surface mount adapter



**1024VAC**  
24 VAC transformer with mounting feet