



ELECTRIC STRIKES

UL LISTED ELECTRIC STRIKES FOR
US & CANADA

PRODUCT



[Go to the product page](#)

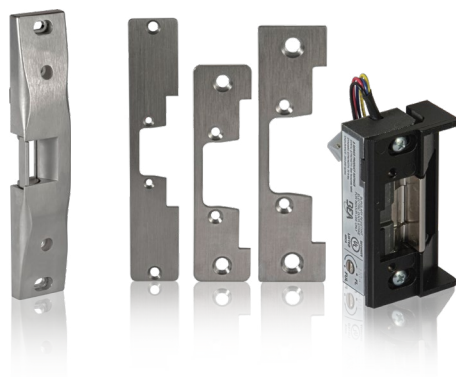
CERTIFICATIONS



DESCRIPTION

BEA's **ELECTRIC STRIKE** portfolio includes **RIM EXIT** and **UNIVERSAL CYLINDRICAL STRIKES** for access control applications.

The **RIM EXIT STRIKE** is designed specifically for rim exit devices. This strike is completely surface mounted, which eliminates the need to cut into the door frame.



The **UNIVERSAL CYLINDRICAL STRIKE** provides controlled access and security for egress and ingress applications where code compliance and safety are paramount. This strike is UL294 and UL1034 listed.



Modular Faceplate Options

Three modular faceplates for the most common door types: hollow metal, aluminum and wood

Standards Compliant

UL 294 & UL1034 listed Universal Cylindrical and Rim Exit strikes

Configurable

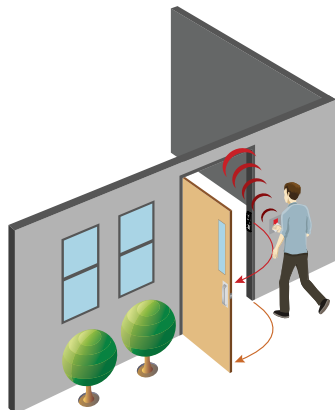
The non-handed fully reversible design is field selectable to 12 or 24 VDC and field reversible with a fail-safe or fail-secure mode

Durable

UL tested to 250,000 cycles, factory tested to 1,000,000 cycles

UL Listed

Universal Cylindrical strikes are rated to 1000 lbs static / 70 lbs dynamic (50 lbs dynamic for CUV model). The Rim Exit strikes are rated to 1500 lbs static / 70 dynamic.



APPLICATIONS



Request-To-Exit

TECHNICAL SPECIFICATIONS

10STRIKERE

Mode	Fail Safe		
Voltage	12 VAC / VDC	24 VAC / VDC	11 - 16 VAC
Duty	Intermittent, Continuous	Intermittent, Continuous	Intermittent, Intermittent
Amps †	0.30, 0.50	0.64, 0.24	0.32 – 0.50
Sound	Buzz, Silent	Buzz, Silent	Buzz, Buzz
Static / Dynamic Strength	1500 lbs / 70 lbs		
Endurance	250,000 cycles (UL tested)		
Latch Throw	¾"		
Standards Compliance	UL 294, UL 1034, UL & cUL listed		

10STRIKECU

Mode	Fail Safe, Fail Secure		
Voltage	12 VDC	24 VDC	12 – 24 VAC
Duty	Continuous	Continuous	Intermittent
Amps †	0.375	0.190	0.280 – 0.565
Sound	Silent	Silent	Buzz
Static / Dynamic Strength	1000 lbs / 70 lbs		
Endurance	250,000 cycles (UL tested)		
Latch Throw	½" or ⅝"		
Standards Compliance	UL 294, UL 1034, UL & cUL listed		

Fail Safe – Lock or locking device that remains unlocked on loss of power

Fail Secure – Lock or locking device that remains locked on loss of power.

Also known as Non-Fail Safe (NFS)

Intermittent Duty – Energized less than 1 minute with duty ratio 1:5

Continuous Duty – Energized 1 minute or more

† Amp ratings are based on maximum current draw at 50 °F and include initial power-up current

‡ Nominal resistance at 77 °F ±7% tolerance

PRODUCT SERIES



10STRIKERE

UL & cUL Listed Rim Exit Electric Strike



10STRIKECU

UL & cUL Listed Universal Cylindrical Electric Strike

DISCLAIMER Information is supplied upon the condition that the persons receiving it will make their own determination as to its suitability for their purposes prior to use. In no event will BEA be responsible for damages of any nature whatsoever resulting from the use of or reliance upon information from this document or the products to which the information refers. BEA has the right without liability to change descriptions and specifications at any time.

WWW.BEASENSORS.COM



BEA AMERICAS / RIDC Park West / 100 Enterprise Drive / Pittsburgh, PA
T 1-800-523-2462 / F 1-888-523-2462 / E info-us@BEAsensors.com

A Halma company