



BOLLARD FAMILY

MOUNTING POST FOR PUSH PLATES

VIDEO



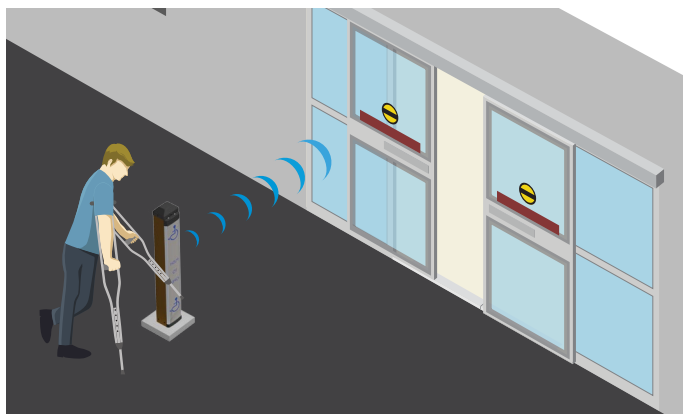
[Watch the product video](#)

DESCRIPTION

BEA's **BOLLARD FAMILY** is designed for mounting push plates, that activate automatic doors, in locations where a mounting surface is not available. This enhances accessibility for those with limited mobility or disabilities.



BOLLARDS are compatible with a variety of push plate shapes and sizes, as well as wireless transmitters.

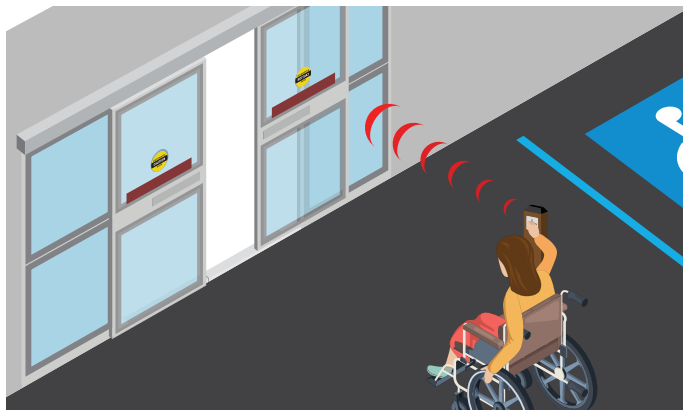


Enhances Accessibility

Compatible with most push plate shapes and sizes, bollards provides a mounting surface for ADA compliant actuators

Versatile Mounting

Can be mounted either on existing concrete or in newly poured concrete



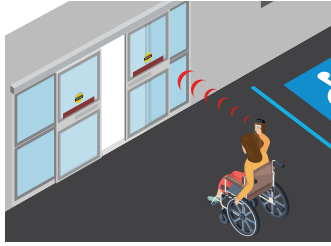
Variety Of Styles Available

Available in silver, bronze and black and with or without hole

Wireless Compatibility

UV-resistant ABS plastic cap allows for transmission when using wireless transmitters

APPLICATIONS



Wireless Compatibility



Limited Mobility

TECHNICAL SPECIFICATIONS

Dimensions (with cap)	41 1/2" (H) × 6 1/4" (W) × 4 1/4" (D)
Material	
Post	Powder-coated, carbon steel (exterior)
Cap	UV-resistant ABS plastic
Bracket	Stainless steel
Push Plate Compatibility*	4 1/2" square, 4 3/4" square (including Panther) Dual-vestibule, 4 1/2" round
Weight	35 lb
Color	Black, Bronze or Silver
Hardware	
Post	1/2" × 13 UNC × 1" socket-head bolts (4) – 3/16" hex
Cap	#6 × 3/4" sheet metal screws (3) and #6 finishing washers (3)
Bracket	3" expansion anchors (4), lock washers (4), and nuts (4)

*"Without hole" versions will accommodate 6" square and 6" round Panther plates as well as surface-mount card readers, key pads, or other surface mount devices.

PRODUCT SERIES



10BOLLARDBRZ
Bollard - Bronze



10BOLLARDSLV
Bollard - Silver



10BOLLARDBLK
Bollard - Black



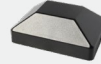
10BOLLARDBRZWOH
Bollard - Bronze
Without hole



10BOLLARDSLVWOH
Bollard - Silver
Without hole



10BOLLARDBLKWOH
Bollard - Black
Without hole



70.0195
Bollard cap



70.5022
U-shaped bollard
mounting bracket



50.0073
Plastic transmitter
shelf

50.5320

BOLLARD hardware pack includes:
Large compression bolts, undercut screws and washers

DISCLAIMER Information is supplied upon the condition that the persons receiving it will make their own determination as to its suitability for their purposes prior to use. In no event will BEA be responsible for damages of any nature whatsoever resulting from the use of or reliance upon information from this document or the products to which the information refers. BEA has the right without liability to change descriptions and specifications at any time.

WWW.BEASENSORS.COM



BEA AMERICAS / RIDC Park West / 100 Enterprise Drive / Pittsburgh, PA
T 1-800-523-2462 / F 1-888-523-2462 / E info-us@BEAsensors.com

A **Halma** company